



# PERRELET

1777



TRADE CATALOGUE 2019





PERRELET

1777



## TABLE OF CONTENTS

---

### GENERAL INFORMATION

|                                |      |
|--------------------------------|------|
| History                        | 4-5  |
| Aesthetic codes                | 6-7  |
| Product - Collection structure | 8    |
| Movements                      | 9-19 |

---

### WATCHES

---

#### WEEKEND

|                    |       |
|--------------------|-------|
| Weekend            | 20-25 |
| Weekend Open Heart | 26-27 |
| Weekend GMT        | 28-29 |

---

#### FIRST CLASS

|                                   |       |
|-----------------------------------|-------|
| First Class                       | 30-33 |
| First Class Skeleton              | 34-35 |
| First Class Double Rotor Skeleton | 36-39 |

---

#### LAB

|         |       |
|---------|-------|
| LAB     | 40-43 |
| LAB GMT | 44-45 |

---

#### TURBINE

|                               |       |
|-------------------------------|-------|
| Turbine EVO                   | 50-51 |
| Turbine Lady                  | 52-53 |
| Turbine                       | 54-55 |
| Turbine XL                    | 56-57 |
| Turbine Yatch - Turbine Diver | 58-59 |
| Turbine Pilot                 | 60-63 |
| Turbine Skeleton              | 64-65 |
| Turbine Chrono                | 66-67 |
| Turbine Chrono Sport          | 68-69 |
| Turbine GMT                   | 70-71 |
| Turbine GMT Worldtimer        | 72-73 |



---

**TURBINE SPECIAL & LIMITED EDITIONS**

|                   |       |
|-------------------|-------|
| Turbine Sung Kang | 76-77 |
| Turbine Paranoia  | 78-79 |
| Turbine Toxic     | 80-81 |
| Turbine Poker     | 82-83 |
| Turbine Macau     | 84-85 |
| Turbine XL Casino | 86-87 |
| Turbillon         | 88-89 |

---

**DIAMOND FLOWER**

|                       |       |
|-----------------------|-------|
| Diamond Flower Amytis | 90-95 |
|-----------------------|-------|

---

**MERCHANDISING**

|        |
|--------|
| 96-103 |
|--------|

---

## PERRELET, INVENTOR OF THE AUTOMATIC MOVEMENT.

WITH ITS RICH, PRESTIGIOUS HERITAGE, PERRELET PERPETUATES ITS KNOW-HOW THROUGH THE AGES.



Abraham-Louis Perrelet develops the first podometer and also becomes the first person to create watches with a cylinder, duplex, calendar and equation escapements. He works on further refining gear trains and improving pinions, gears, the escapement as well as his unique automatic winding mechanism.

Birth of Abraham-Louis Perrelet in Le Locle, a Swiss village in the mountains of Neuchâtel. Fascinated by watchmaking professions, as a teenager he devotes himself to the construction of a certain number of precision instruments. The mastery of his art, his renowned skills and creative genius would make him one of the greatest watchmaking references of all time.



His growing interest in astronomy, physics and science leads Louis-Frédéric Perrelet to design so-called "intelligent" watches. An astronomical clock designed in 1815 and presented at the Universal Exhibition in Paris in 1823 results in him becoming watchmaker-mechanic to three French kings.

Honorary evidence of the extent of his reputation across Europe, as well as his talent and his perseverance, in addition to multiple gold medals, Louis-Frédéric Perrelet, is given the rank of Knight of the Legion of Honor.

1729

1780

1823

1834

1777

1781

1827

From the 1770s onwards, Abraham-Louis Perrelet applies himself to perfecting a system which, from one single initial impulse, would continue to function indefinitely. It was in 1777 that he develops his completely revolutionary invention – the self-winding or automatic movement. To this very day nobody has managed to improve on this to give life to mechanical calibers and his invention continues to make its mark on watchmaking history.



At the Exhibition of Products of French Industry, he presents a chronograph counter for physics and astronomy with flyback hand. This model, for which a patent is officially registered in March 1828, earns him a medal from the Académie des Sciences in 1830.



Heir to his grandfather's watchmaking genius, Louis-Frédéric Perrelet is born in 1781. Demonstrating a predisposition for mechanics and mathematics, he is trained by his grandfather prior to moving to Paris to study in Breguet's workshops. Thanks to his talent, he rapidly proves his skill as an independent watchmaker.







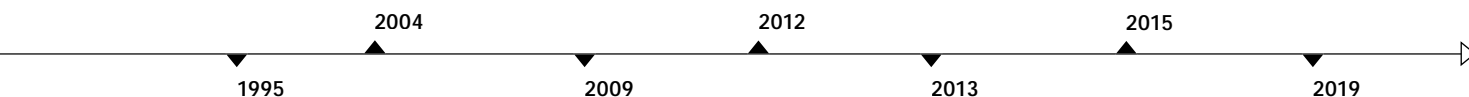
The company is acquired by Miguel Rodriguez. A passionate entrepreneur with great vision, he brings the power of a group which incorporates all the watchmaking professions to Perrelet.



Perrelet takes a decisive new step on the path towards autonomy by adopting and equipping most of its timepieces with Caliber P-321, the first Manufacture-made movement entirely developed and produced within its workshops. New horological complications are subsequently added to this base caliber. Perrelet thus acquires complete production autonomy, thereby securing both its creative freedom and its horological legitimacy.



In 2015, Perrelet celebrates the 20th anniversary of its emblematic Double Rotor concept. With the First Class Double Rotor Skeleton Limited Edition equipped with an in-house Manufacture movement, Caliber P-481, Perrelet associates the horological tradition of its innovative Double Rotor concept with its skeleton-work expertise.



The House of Perrelet develops, perfects and produces the first so-called "double rotor" caliber: a system unique in its kind, which connects the winding weight of the automatic system to a rotor on the dial side. The Dipteros model thus heralds an important phase for the future of the brand, and paves the way for future new and exclusive developments.



Perrelet presents the Turbine Chrono, thereby demonstrating its creative ability to combine the Turbine effect with a watchmaking complication. That same year, Perrelet also launches his Turbillon model, a clever combination of the Turbine with a Tourbillon caliber, manufactured in its own workshops. Through its two great innovations, Perrelet provides irrefutable proof of its watchmaking expertise and its ability.

In 2019 Perrelet proudly celebrates the 10th anniversary of its iconic Turbine model.

The Turbine EVO is the culmination of a series of technical developments combined with a refined sport design. Equipped with the new generation of the in-house Manufacture movement, Caliber P-331, the Turbine EVO model has a new case construction which now offers a stainless steel bracelet version.

Perrelet presents the emblematic Turbine model. Inspired by the so-called "double rotor" movement, the oscillating weight on the dial side is transformed into a propeller which makes a striking impression with its extreme rotating speed. The Turbine thus opens the door to artistic and horological creations that are both unique and authentic.





### PERFECT ALCHEMY BETWEEN TRADITION AND INNOVATION

Perrelet is synonymous with inventiveness, authenticity and quality. Our vision of the product leads us to opt for technical developments which are based on reliable calibres. Perrelet perpetuates its illustrious heritage of artistry, craftsmanship and technical prowess with exclusively mechanical self-winding watches.

Perrelet's watches add to the prestige of fine watchmaking with models that are eminently true to the company's history and identity. The authenticity of the brand is evidenced by the standard features mentioned below :



#### DOUBLE ROTOR

Embodying the singular nature of Perrelet, inventor of the automatic movement, the patented Double Rotor gives a starring role to the ingenious winding system. The traditional rotor is complemented by another rotor that is permanently visible, either in the center or around the periphery of the dial, depending on the model. This perfectly synchronized pair ensures enhanced performance and enables the wearer to admire or keep track of the steady to-and-fro oscillations.

#### TURBINE

Since 2009, the Perrelet Double Rotor has been interpreted in a new way with the upper rotor replaced by a large 12-blade wheel that turns freely over the entire dial surface, in step with wrist movements. The Turbine collection plays with a wide range of colors and motifs appearing as a backdrop and creating fascinating optical effects. Visual pleasure is the chief priority. Over the years, the Turbine has become an authentic brand icon and has evolved considerably. In 2013, horological complications such as the chronograph and the tourbillon have been added. An important step has thus been taken, paving the way for promising further developments.







## LUGS

These elements serving to attach the strap or bracelet make a major contribution to the Perrelet style. They are generously sized and stand out from the case so as to accentuate their presence, while their sharp-angled design asserts their contemporary nature and their broad curves ensure optimal comfort on the wrist.

## FLUTED PATTERN

Fluting is a traditional watchmaking pattern that has been given a contemporary twist. The square-section hollows form cleanly structured pilasters on the case middles. While generally fairly closely spaced on classic watches, they are broadened and even raised on the daring Turbine models. This pattern is picked up on certain crowns to ensure an enhanced grip.



## INTERNATIONAL WARRANTY

Every wristwatch produced by Perrelet comes with an international warranty certificate. Perrelet provides a warranty of 3 years on material defects and workmanship, valid from the date of purchase.



## PRODUCT – COLLECTION STRUCTURE



### COLLECTION

#### Weekend

Smart and vintage



#### First Class Double Rotor

Unique and elegant



#### Turbine

Distinctive and sporty



#### Lab

Sport chic



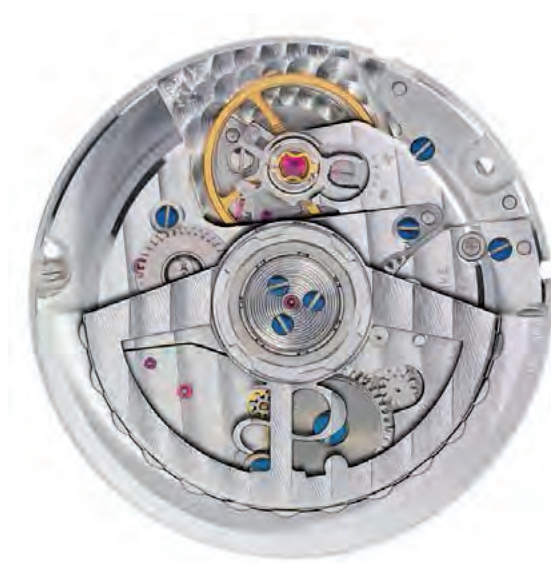
#### Diamond Flower

Sophisticated and contemporary



## P-321

|                   |                                                                         |                                    |
|-------------------|-------------------------------------------------------------------------|------------------------------------|
| Movement          | Mechanical automatic                                                    |                                    |
|                   | 3 Hands-Date                                                            |                                    |
|                   | P-321 / In-house caliber                                                |                                    |
| Functions         | Central hands indicating hours, minutes and seconds. Date at 6 o'clock  |                                    |
| Dimensions        | Thickness (oscillating weight included)                                 | 3.85 mm                            |
|                   | Fitting diameter                                                        | 25.60 mm                           |
|                   | Total movement diameter                                                 | 26.20 mm                           |
| Specifications    | Vibrations per hour                                                     | 28,800 A/h (4 Hz)                  |
|                   | Number of rubies                                                        | 25                                 |
|                   | Number of components                                                    | 93                                 |
|                   | Autonomy in hours (fully wound up)                                      | 42 hours                           |
| Special finishing | Main plate                                                              | Circular grained, rhodium plated   |
|                   | Bridges                                                                 | Côte de Genève, rhodium plated     |
|                   | Oscillating weight                                                      | Perrelet hollowed and personalized |
| Systems           | Automatic winding mechanism with ballbearing-mounted oscillating weight |                                    |
|                   | Anti-shock system on the balance wheel (Incabloc® shock absorbers)      |                                    |
|                   | Fine adjustment device                                                  |                                    |



### P-331

#### Movement

Mechanical automatic  
Turbine  
P-331 / In-house caliber

#### Functions

Central hands indicating hours, minutes and seconds

#### Dimensions

|                                         |          |
|-----------------------------------------|----------|
| Thickness (oscillating weight included) | 3.85 mm  |
| Fitting diameter                        | 25.60 mm |
| Total movement diameter                 | 26.20 mm |

#### Specifications

|                                    |                   |
|------------------------------------|-------------------|
| Vibrations per hour                | 28,800 A/h (4 Hz) |
| Number of rubies                   | 25                |
| Number of components               | 92                |
| Autonomy in hours (fully wound up) | 42 hours          |

#### Special finishing

|                    |                                    |
|--------------------|------------------------------------|
| Main plate         | Circular grained, rhodium plated   |
| Bridges            | Sandblasted, rhodium plated        |
| Oscillating weight | Perrelet hollowed and personalized |

#### Systems

Automatic winding mechanism with ballbearing-mounted oscillating weight  
Anti-shock system on the balance wheel (Incabloc® shock absorbers)  
Fine adjustment device





## P-391

|                   |                                                                         |                                    |
|-------------------|-------------------------------------------------------------------------|------------------------------------|
| Movement          | Mechanical automatic                                                    |                                    |
|                   | First Class Open Heart                                                  |                                    |
|                   | P-391 / In-house caliber                                                |                                    |
| Functions         | Central hands indicating hours, minutes and seconds                     |                                    |
| Dimensions        | Thickness (oscillating weight included)                                 | 3.85 mm                            |
|                   | Fitting diameter                                                        | 25.60 mm                           |
|                   | Total movement diameter                                                 | 26.20 mm                           |
| Specifications    | Vibrations per hour                                                     | 28,800 A/h (4 Hz)                  |
|                   | Number of rubies                                                        | 25                                 |
|                   | Number of components                                                    | 92                                 |
|                   | Autonomy in hours (fully wound up)                                      | 42 hours                           |
| Special finishing | Specialty                                                               | Open see-through balance wheel     |
|                   | Main plate                                                              | Circular grained, rhodium plated   |
|                   | Bridges                                                                 | Côte de Genève, rhodium plated     |
|                   | Oscillating weight                                                      | Perrelet hollowed and personalized |
| Systems           | Automatic winding mechanism with ballbearing-mounted oscillating weight |                                    |
|                   | Anti-shock system on the balance wheel (Incabloc® shock absorbers)      |                                    |
|                   | Fine adjustment device                                                  |                                    |





### P-381

#### Movement

Mechanical automatic  
Skeleton  
P-381 / In-house caliber

#### Functions

Central hands indicating hours, minutes and seconds

#### Dimensions

|                                         |          |
|-----------------------------------------|----------|
| Thickness (oscillating weight included) | 3.85 mm  |
| Fitting diameter                        | 25.60 mm |
| Total movement diameter                 | 26.20 mm |

#### Specifications

|                                    |                   |
|------------------------------------|-------------------|
| Vibrations per hour                | 28,800 A/h (4 Hz) |
| Number of rubies                   | 25                |
| Number of components               | 92                |
| Autonomy in hours (fully wound up) | 42 hours          |

#### Special finishing

|                    |                                    |
|--------------------|------------------------------------|
| Specialty          | Manufacture skeleton-working       |
| Main plate         | Circular grained, rhodium plated   |
| Bridges            | Circular grained, rhodium plated   |
| Screws             | Blue                               |
| Oscillating weight | Perrelet hollowed and personalized |

#### Systems

Automatic winding mechanism with ballbearing-mounted oscillating weight  
Anti-shock system on the balance wheel (Incabloc® shock absorbers)  
Fine adjustment device



## P-181

|                   |                                                                                                                                  |                                                                                |
|-------------------|----------------------------------------------------------------------------------------------------------------------------------|--------------------------------------------------------------------------------|
| Movement          | Mechanical automatic                                                                                                             |                                                                                |
|                   | Double Rotor                                                                                                                     |                                                                                |
|                   | P-181 / Perrelet Exclusive Double Rotor                                                                                          |                                                                                |
| Functions         | Central hands indicating hours, minutes and seconds                                                                              |                                                                                |
| Dimensions        | Thickness (oscillating weight included)                                                                                          | 5.15 mm                                                                        |
|                   | Fitting diameter                                                                                                                 | 31.60 mm                                                                       |
|                   | Total movement diameter                                                                                                          | 31.60 mm                                                                       |
| Specifications    | Vibrations per hour                                                                                                              | 28,800 A/h (4 Hz)                                                              |
|                   | Number of rubies                                                                                                                 | 22                                                                             |
|                   | Number of components                                                                                                             | 100                                                                            |
|                   | Autonomy in hours (fully wound up)                                                                                               | 42 hours                                                                       |
| Special finishing | Specialty                                                                                                                        | Double Rotor                                                                   |
|                   | Main plate                                                                                                                       | Circular grained, rhodium plated                                               |
|                   | Bridges                                                                                                                          | Exclusive Perrelet tapestry, snailed, rhodium plated                           |
|                   | Screws                                                                                                                           | Blue                                                                           |
|                   | Oscillating weight                                                                                                               | Hardened mineral crystal, non-reflecting coating and sandblasted Perrelet logo |
| Systems           | Automatic winding mechanism with ballbearing-mounted oscillating weight coupled with a second inertia weight mounted on the dial |                                                                                |
|                   | Anti-shock system on the balance wheel (Incabloc® shock absorbers)                                                               |                                                                                |
|                   | Fine adjustment device                                                                                                           |                                                                                |



### P-181-H

|                   |                                                                                                                                  |                                               |
|-------------------|----------------------------------------------------------------------------------------------------------------------------------|-----------------------------------------------|
| Movement          | Mechanical automatic                                                                                                             |                                               |
|                   | Double Rotor                                                                                                                     |                                               |
|                   | P-181 / In-house caliber                                                                                                         |                                               |
| Functions         | Central hands indicating hours, minutes and seconds. Date at 6 o'clock                                                           |                                               |
| Dimensions        | Thickness (oscillating weight included)                                                                                          | 4.90 mm                                       |
|                   | Fitting diameter                                                                                                                 | 31.60 mm                                      |
|                   | Total movement diameter                                                                                                          | 31.60 mm                                      |
| Specifications    | Vibrations per hour                                                                                                              | 28,800 A/h (4 Hz)                             |
|                   | Number of rubies                                                                                                                 | 26                                            |
|                   | Number of components                                                                                                             | 100                                           |
|                   | Autonomy in hours (fully wound up)                                                                                               | 42 hours                                      |
| Special finishing | Specialty                                                                                                                        | Double Rotor                                  |
|                   | Main plate                                                                                                                       | Circular grained, rhodium plated              |
|                   | Bridges                                                                                                                          | Côte de Genève, rhodium plated                |
|                   | Oscillating weight                                                                                                               | Hollowed and adorned with Perrelet decoration |
| Systems           | Automatic winding mechanism with ballbearing-mounted oscillating weight coupled with a second inertia weight mounted on the dial |                                               |
|                   | Anti-shock system on the balance wheel (Incabloc® shock absorbers)                                                               |                                               |
|                   | Adjusted to heat cold isochronism and 6 positions                                                                                |                                               |



## P-481

|                   |                                                                                                                                  |                                               |
|-------------------|----------------------------------------------------------------------------------------------------------------------------------|-----------------------------------------------|
| Movement          | Mechanical automatic                                                                                                             |                                               |
|                   | Double Rotor Skeleton                                                                                                            |                                               |
|                   | P-481 / In-house caliber                                                                                                         |                                               |
| Functions         | Central hands indicating hours, minutes and seconds                                                                              |                                               |
| Dimensions        | Thickness (oscillating weight included)                                                                                          | 4.95 mm                                       |
|                   | Fitting diameter                                                                                                                 | 25.60 mm                                      |
|                   | Total movement diameter                                                                                                          | 26.20 mm                                      |
| Specifications    | Vibrations per hour                                                                                                              | 28,800 A/h (4 Hz)                             |
|                   | Number of rubies                                                                                                                 | 26                                            |
|                   | Number of components                                                                                                             | 100                                           |
|                   | Autonomy in hours (fully wound up)                                                                                               | 42 hours                                      |
| Special finishing | Specialty                                                                                                                        | Double Rotor, Manufacture skeleton-working    |
|                   | Main plate                                                                                                                       | Circular grained, rhodium plated              |
|                   | Bridges                                                                                                                          | Circular grained, rhodium plated              |
|                   | Screws                                                                                                                           | Blue                                          |
|                   | Oscillating weight                                                                                                               | Hollowed and adorned with Perrelet decoration |
| Systems           | Automatic winding mechanism with ballbearing-mounted oscillating weight coupled with a second inertia weight mounted on the dial |                                               |
|                   | Anti-shock system on the balance wheel (Incabloc® shock absorbers)                                                               |                                               |
|                   | Adjusted to heat cold isochronism and 6 positions                                                                                |                                               |





## P-361

|                   |                                                                                                                                       |                                           |
|-------------------|---------------------------------------------------------------------------------------------------------------------------------------|-------------------------------------------|
| Movement          | Mechanical automatic                                                                                                                  |                                           |
|                   | Turbine Chrono                                                                                                                        |                                           |
|                   | P-361 / Perrelet Exclusive Chronograph                                                                                                |                                           |
| Functions         | Central hands indicating hours, minutes and chronograph seconds.<br>Sapphire central 60-minute chronograph counter. Date at 6 o'clock |                                           |
| Dimensions        | Thickness (oscillating weight included)                                                                                               | 7.55 mm                                   |
|                   | Fitting diameter                                                                                                                      | 30.00 mm                                  |
|                   | Total movement diameter                                                                                                               | 30.00 mm                                  |
| Specifications    | Vibrations per hour                                                                                                                   | 28,800 A/h (4 Hz)                         |
|                   | Number of rubies                                                                                                                      | 41                                        |
|                   | Number of components                                                                                                                  | 175                                       |
|                   | Autonomy in hours (fully wound up)                                                                                                    | 42 hours                                  |
| Special finishing | Main plate                                                                                                                            | Circular grained, rhodium plated          |
|                   | Bridges                                                                                                                               | Circular grained, snailed, rhodium plated |
|                   | Oscillating weight                                                                                                                    | Perrelet hollowed and personalized        |
| Systems           | Automatic winding mechanism with ballbearing-mounted oscillating weight                                                               |                                           |
|                   | Anti-shock system on the balance wheel (Incabloc® shock absorbers)                                                                    |                                           |
|                   | Fine adjustment device                                                                                                                |                                           |





## P-401

|                   |                                                                           |                                               |
|-------------------|---------------------------------------------------------------------------|-----------------------------------------------|
| Movement          | Mechanical automatic                                                      |                                               |
|                   | Turbine GMT                                                               |                                               |
|                   | P-401 / In-house caliber                                                  |                                               |
| Functions         | Central hands indicating hours, minutes and seconds. Second time zone 24h |                                               |
| Dimensions        | Thickness (oscillating weight included)                                   | 4.25 mm                                       |
|                   | Fitting diameter                                                          | 25.60 mm                                      |
|                   | Total movement diameter                                                   | 26.20 mm                                      |
| Specifications    | Vibrations per hour                                                       | 28,800 A/h (4 Hz)                             |
|                   | Number of rubies                                                          | 25                                            |
|                   | Number of components                                                      | 99                                            |
|                   | Autonomy in hours (fully wound up)                                        | 42 hours                                      |
| Special finishing | Specialty                                                                 | GMT (Second time zone 24h)                    |
|                   | Main plate                                                                | Circular grained, rhodium plated              |
|                   | Bridges                                                                   | Sandblasted, rhodium plated                   |
|                   | Oscillating weight                                                        | Hollowed and adorned with Perrelet decoration |
| Systems           | Automatic winding mechanism with ballbearing-mounted oscillating weight   |                                               |
|                   | Anti-shock system on the balance wheel (Incabloc® shock absorbers)        |                                               |
|                   | Adjusted to heat cold isochronism and 6 positions                         |                                               |



### P-311

|                   |                                                                                |                                  |
|-------------------|--------------------------------------------------------------------------------|----------------------------------|
| Movement          | Mechanical automatic                                                           |                                  |
|                   | Tourbillon                                                                     |                                  |
|                   | P-311 / In-house caliber                                                       |                                  |
| Functions         | Hour and minute at 6 o'clock, seconds on the tourbillon carriage at 12 o'clock |                                  |
| Dimensions        | Thickness (oscillating weight included)                                        | 5.03 mm                          |
|                   | Fitting diameter                                                               | 28.20 mm                         |
|                   | Total movement diameter                                                        | 28.80 mm                         |
| Specifications    | Vibrations per hour                                                            | 28,800 A/h (4 Hz)                |
|                   | Number of rubies                                                               | 23                               |
|                   | Number of components                                                           | 140                              |
|                   | Autonomy in hours (fully wound up)                                             | 65 hours                         |
| Special finishing | Specialty                                                                      | Tourbillon                       |
|                   | Main plate                                                                     | Circular grained, rhodium plated |
|                   | Bridges                                                                        | Côte de Genève, rhodium plated   |
|                   | Screws                                                                         | Blue                             |
|                   | Oscillating weight                                                             | Perrelet engraved                |
| Systems           | Automatic winding mechanism with ballbearing-mounted oscillating weight        |                                  |
|                   | Anti-shock system on the balance wheel (Incabloc® shock absorbers)             |                                  |
|                   | Fine adjustment device                                                         |                                  |



## P-371

|                   |                                                                                              |                                         |
|-------------------|----------------------------------------------------------------------------------------------|-----------------------------------------|
| Movement          | Mechanical automatic                                                                         |                                         |
|                   | Tourbillon                                                                                   |                                         |
|                   | P-371 / In-house caliber                                                                     |                                         |
| Functions         | Central hands indicating hours and minutes. Seconds on the tourbillon carriage at 12 o'clock |                                         |
| Dimensions        | Thickness (oscillating weight included)                                                      | 5.30 mm                                 |
|                   | Fitting diameter                                                                             | 32.80 mm                                |
|                   | Total movement diameter                                                                      | 33.20 mm                                |
| Specifications    | Vibrations per hour                                                                          | 28,800 A/h (4 Hz)                       |
|                   | Number of rubies                                                                             | 27                                      |
|                   | Number of components                                                                         | 142                                     |
|                   | Autonomy in hours (fully wound up)                                                           | 65 hours                                |
| Special finishing | Specialty                                                                                    | Tourbillon                              |
|                   | Main plate                                                                                   | Circular grained, rhodium plated        |
|                   | Bridges                                                                                      | Côte de Genève, snailed, rhodium plated |
|                   | Escapement                                                                                   | Oxidized silicon wheel and lever        |
|                   | Screws                                                                                       | Blue                                    |
|                   | Oscillating weight                                                                           | Perrelet engraved                       |
| Systems           | Automatic winding mechanism with ballbearing-mounted oscillating weight                      |                                         |
|                   | Anti-shock system on the balance wheel (Incabloc® shock absorbers)                           |                                         |
|                   | Fine adjustment device                                                                       |                                         |







# WEEKEND



The WEEKEND 3 Hands collection boasts a classic, timeless design with a touch of retro and contemporary interpretation. Elegant and refined timepieces with a mechanical automatic winding movement offering 42-hour power reserve. In a steel or PVD 4N stainless steel case, with its 39 mm diameter case, WEEKEND 3 Hands is the perfect watch for a classical casual or smart daily wear and also for special occasions.

## Collection specifications

|          |                                    |                                                                        |
|----------|------------------------------------|------------------------------------------------------------------------|
| Movement | Mechanical automatic               | P-321 / In-house caliber                                               |
|          | Function                           | Central hands indicating hours, minutes and seconds. Date at 3 o'clock |
|          | Vibrations per hour                | 28,800 (4 Hz)                                                          |
|          | Autonomy in hours (fully wound up) | 42 hours                                                               |
|          | Number of rubies                   | 25 jewels                                                              |
| Case     | Case                               | Ø 39 mm                                                                |
|          | Case thickness                     | 9.56 mm                                                                |
|          | Crystal                            | Glareproofed sapphire crystal (front) / Mineral glass (back)           |
|          | Caseback                           | See-through caseback                                                   |
|          | Water-resistance                   | 5 ATM                                                                  |
| Bracelet | Buckle                             | Pin buckle (leather strap) or deployant clasp (steel bracelet)         |
|          | Width of strap (lugs / buckle)     | 20 / 18 mm                                                             |


**A1300/1**

Stainless steel  
Sunbrushed silver dial, hour-markers  
Black calf strap with alligator finishing  
Stainless steel buckle


**A1300/2**

Stainless steel  
Sunbrushed black dial, hour-markers  
Black calf strap with alligator finishing  
Stainless steel buckle


**A1300/3**

Stainless steel  
White lacquered dial, hour-markers  
Black calf strap with alligator finishing  
Stainless steel buckle


**A1300/4**

Stainless steel  
Sunbrushed silver dial, hour-markers  
Stainless steel bracelet  
Stainless steel buckle


**A1300/5**

Stainless steel  
Sunbrushed black dial, hour-markers  
Stainless steel bracelet  
Stainless steel buckle


**A1300/6**

Stainless steel  
White lacquered dial, hour-markers  
Stainless steel bracelet  
Stainless steel buckle



**A1301/1**

Stainless steel with 4N gold PVD coating\*  
Sunbrushed silver dial, hour-markers  
Brown calf strap with alligator finishing  
Stainless steel buckle with 4N gold PVD coating\*



**A1301/2**

Stainless steel with 4N gold PVD coating\*  
Sunbrushed anthracite dial, hour-markers  
Brown calf strap with alligator finishing  
Stainless steel buckle with 4N gold PVD coating\*



**A1301/3**

Stainless steel with 4N gold PVD coating\*  
White lacquered dial, hour-markers  
Brown calf strap with alligator finishing  
Stainless steel buckle with 4N gold PVD coating\*





## WEEKEND OPEN HEART

A classic, timeless design with a touch of retro and contemporary interpretation in order to satisfy watch-lovers in search of elegant and refined timepieces. The WEEKEND Open Heart model lays special emphasis on watchmaking technology, enabling micromechanics lovers to admire the heart of this piece, as the regulating organ is visible thanks to an opening at 6 o'clock.

### Collection specifications

|          |                                    |                                                              |
|----------|------------------------------------|--------------------------------------------------------------|
| Movement | Mechanical automatic               | P-391 / In-house caliber                                     |
|          | Function                           | Central hands indicating hours, minutes and seconds          |
|          | Special feature                    | Visible balance wheel                                        |
|          | Vibrations per hour                | 28,800 (4 Hz)                                                |
|          | Autonomy in hours (fully wound up) | 42 hours                                                     |
|          | Number of rubies                   | 25 jewels                                                    |
| Case     | Case                               | Ø 39 mm                                                      |
|          | Case thickness                     | 9.56 mm                                                      |
|          | Crystal                            | Glareproofed sapphire crystal (front) / Mineral glass (back) |
|          | Caseback                           | See-through caseback                                         |
|          | Water-resistance                   | 5 ATM                                                        |
| Bracelet | Buckle                             | Pin buckle                                                   |
|          | Width of strap (lugs / buckle)     | 20 / 18 mm                                                   |





**A1302/1**

Stainless steel  
Sunbrushed silver dial, hour-markers  
Black calf strap with alligator finishing  
Stainless steel buckle



**A1302/2**

Stainless steel  
Sunbrushed silver dial, hour-markers  
Stainless steel bracelet  
Stainless steel buckle



**A1303/1**

Stainless steel with 4N gold PVD coating\*  
Sunbrushed silver dial, hour-markers  
Brown calf strap with alligator finishing  
Stainless steel buckle with 4N gold PVD coating\*



The WEEKEND line is faithful to the values that have always made this Swiss brand unique: excellence in manufacturing, in keeping with the demands of Swiss watchmaking tradition in both the technique and the decorations and finishing. With its sober and pure dial's aesthetics the WEEKEND GMT offers an optimal legibility of the second time zone on 24 hours thanks to its red hand turning on the internal ring of the dial.

### Collection specifications

|          |                                    |                                                                           |
|----------|------------------------------------|---------------------------------------------------------------------------|
| Movement | Mechanical automatic               | P-401 / In-house caliber                                                  |
|          | Function                           | Central hands indicating hours, minutes and seconds. Second time zone 24h |
|          | Vibrations per hour                | 28,800 (4 Hz)                                                             |
|          | Autonomy in hours (fully wound up) | 42 hours                                                                  |
|          | Number of rubies                   | 25 jewels                                                                 |
| Case     | Case                               | Ø 39 mm                                                                   |
|          | Case thickness                     | 9.56 mm                                                                   |
|          | Crystal                            | Glareproofed sapphire crystal (front) / Mineral glass (back)              |
|          | Caseback                           | See-through caseback                                                      |
|          | Water-resistance                   | 5 ATM                                                                     |
| Bracelet | Buckle                             | Pin buckle                                                                |
|          | Width of strap (lugs / buckle)     | 20 / 18 mm                                                                |


**A1304/1**

Stainless steel  
Sunbrushed silver dial, hour-markers  
Black calf strap with alligator finishing  
Stainless steel buckle


**A1304/2**

Stainless steel  
Sunbrushed silver dial, hour-markers  
Stainless steel bracelet  
Stainless steel buckle


**A1305/1**

Stainless steel with 4N gold PVD coating\*  
Sunbrushed silver dial, hour-markers  
Brown calf strap with alligator finishing  
Stainless steel buckle with 4N gold PVD coating\*



# FIRST CLASS







P-321 / In-house caliber

The sober and refined black, white or anthracite dials are housed in a distinctively fluted case, one of the Brand's hallmarks. The First Class collection is available with open case back fitted with a sapphire crystal which allows an unimpeded view into the movement. True to its characteristic design codes, Perrelet maintains its quality of legibility and endows this collection with a contemporary and yet timeless value. Two sophisticated versions feature a rose gold 4N case.

### Collection specifications

|          |                                    |                                                                        |
|----------|------------------------------------|------------------------------------------------------------------------|
| Movement | Mechanical automatic               | P-321 / In-house caliber                                               |
|          | Function                           | Central hands indicating hours, minutes and seconds. Date at 6 o'clock |
|          | Vibrations per hour                | 28,800 (4 Hz)                                                          |
|          | Autonomy in hours (fully wound up) | 42 hours                                                               |
|          | Number of rubies                   | 25 jewels                                                              |
| Case     | Case                               | Ø 42.50 mm                                                             |
|          | Case thickness                     | 10.70 mm                                                               |
|          | Crystal                            | Glareproofed sapphire crystal on both sides                            |
|          | Caseback                           | See-through caseback                                                   |
|          | Water-resistance                   | 5 ATM                                                                  |
| Bracelet | Buckle                             | Folding clasp buckle / Pin buckle                                      |
|          | Width of strap (lugs / buckle)     | 20 / 18 mm                                                             |



**A3044/1**

Rose gold (18 cts, 4N)  
Grained/»guilloché» white dial, golden  
hour-markers and hands  
Brown alligator strap  
Rose gold (18 cts, 4N) pin buckle



**A3044/2**

Rose gold (18 cts, 4N)  
Grained/»guilloché» black dial, golden  
hour-markers and hands  
Black alligator strap  
Rose gold (18 cts, 4N) pin buckle



## FIRST CLASS SKELETON



P-381 / In-house caliber

Heir to a proud lineage in which timeless elegance is passed down from generation to generation, the First Class collection enriches its pure aesthetic with an in-house skeleton movement, Caliber P-381, thereby giving rise to the First Class Skeleton. The central part of the openworked dial provides ample views of the beautiful mechanism, while 18K rose gold lends a precious touch to the case with its fluted pattern, a hallmark of the First Class family.

### Collection specifications

|          |                                    |                                                     |
|----------|------------------------------------|-----------------------------------------------------|
| Movement | Mechanical automatic               | P-381 / In-house caliber                            |
|          | Function                           | Central hands indicating hours, minutes and seconds |
|          | Special feature                    | Manufacture skeleton-working                        |
|          | Vibrations per hour                | 28,800 (4 Hz)                                       |
|          | Autonomy in hours (fully wound up) | 42 hours                                            |
|          | Number of rubies                   | 25 jewels                                           |
| Case     | Case                               | Ø 42.50 mm                                          |
|          | Case thickness                     | 10.70 mm                                            |
|          | Crystal                            | Glareproofed sapphire crystal on both sides         |
|          | Caseback                           | See-through caseback                                |
|          | Water-resistance                   | 5 ATM                                               |
| Bracelet | Buckle                             | Pin buckle                                          |
|          | Width of strap (lugs/buckle)       | 20 / 18 mm                                          |



**A3043/1**

Rose gold (18 cts, 4N)  
Cut-out white «guilloché» dial, golden  
hour-markers and blued hands  
Brown alligator strap  
Rose gold (18 cts, 4N) pin buckle



**A3043/2**

Rose gold (18 cts, 4N)  
Cut-out black «guilloché» dial, golden  
hour-markers and blued hands  
Black alligator strap  
Rose gold (18 cts, 4N) pin buckle



## FIRST CLASS DOUBLE ROTOR SKELETON



P-481 / In-house caliber

A new take on the brand's great classic gives rise to the latest First Class model, a tribute to traditional timepieces enhanced with contemporary accents. With the First Class Double Rotor Skeleton watch, Perrelet combines the horological traditions embodied in its innovative Double Rotor created 20 years ago with its expertise in the art of skeleton working. Thanks to this ingenious association, the openworked dial enables the eye to wander leisurely through the intricate depths of the mechanism, lulled by the natural rhythm of the second rotor. Perrelet is a full-fledged Manufacture that has opted to equip this model with Caliber P-481.

### Collection specifications

|               |                                    |                                                       |
|---------------|------------------------------------|-------------------------------------------------------|
| Movement      | Mechanical automatic               | P-481/ In-house caliber                               |
|               | Function                           | Central hands indicating hours, minutes and seconds   |
|               | Special feature                    | Double Rotor Technology, Manufacture skeleton-working |
|               | Vibrations per hour                | 28,800 (4 Hz)                                         |
|               | Autonomy in hours (fully wound up) | 42 hours                                              |
|               | Number of rubies                   | 26 jewels                                             |
| Case          | Case                               | Ø 42.50 mm                                            |
|               | Case thickness                     | 10.70 mm                                              |
|               | Crystal                            | Glareproofed sapphire crystal on both sides           |
|               | Caseback                           | See-through caseback                                  |
|               | Water-resistance                   | 5 ATM                                                 |
| Bracelet      | Buckle                             | Folding clasp buckle                                  |
|               | Width of strap (lugs/buckle)       | 20 / 18 mm                                            |
| Other feature |                                    | Second rotor on the dial side                         |





**A1091/1**

Stainless steel  
Cut-out white «guilloché» dial, hour-markers.  
Double Rotor with "Côtes de Genève décor"  
Brown alligator strap  
Stainless steel buckle



**A1091/1A**

Stainless steel  
Cut-out white «guilloché» dial, hour-markers.  
Double Rotor with "Côtes de Genève décor"  
Black alligator strap  
Stainless steel buckle



**A1091/4**

Stainless steel  
Cut-out white «guilloché» dial, hour-markers.  
Double Rotor with "Côtes de Genève décor"  
Stainless steel bracelet  
Stainless steel buckle



**A1202/1**

240 years anniversary  
Cut-out black «guilloché» dial, hour-markers. Black  
NAC coated movement and Double Rotor with  
«Côtes de Genève décor»  
Black alligator strap  
Stainless steel folding clasp  
**Limited edition to 240 pieces**



---

## FIRST CLASS DOUBLE ROTOR SKELETON

---



**A1091/2**

Stainless steel  
Cut-out black «guilloché» dial, hour-markers.  
Double Rotor with "Côtes de Genève décor"  
Black alligator strap  
Stainless steel buckle



**A1091/5**

Stainless steel  
Cut-out black «guilloché» dial, hour-markers.  
Double Rotor with «Côtes de Genève décor».  
Stainless steel bracelet  
Stainless steel buckle



**A1091/3**

Stainless steel  
Cut-out blue «guilloché» dial, hour-markers.  
Double Rotor with «Côtes de Genève décor».  
Blue alligator strap  
Stainless steel folding clasp buckle



**A1091/6**

Stainless steel  
Cut-out blue «guilloché» dial, hour-markers.  
Double Rotor with «Côtes de Genève décor».  
Stainless steel bracelet  
Stainless steel buckle







LAB



The LAB model heralds a casual chic collection. Its stainless steel 42 x 42 mm cushion-shaped case unveils a three-dimensional dial achieved by the multi-level structure. The cut-out hour-markers with SuperLuminova are applied to a sapphire crystal ring. The unusual use of this transparent element was specifically intended to enable the owner of the LAB watch to observe the motion of the oscillating weight while reading the time. Its Manufacture automatic movement enables the LAB to combine technical perfection with a captivating and innovative design, remaining true to the DNA of the brand with its signature "dial in motion".

## Collection specifications

|               |                                    |                                                                                                  |
|---------------|------------------------------------|--------------------------------------------------------------------------------------------------|
| Movement      | Mechanical automatic               | P-411 / In-house caliber                                                                         |
|               | Function                           | Central hour, minute, second, date window at 6 O'Clock, automatic winding-mechanism on dial-side |
|               | Special feature                    | Peripheral Technology                                                                            |
|               | Vibrations per hour                | 28,800 (4Hz)                                                                                     |
|               | Autonomy in hours (fully wound up) | 42                                                                                               |
|               | Number of rubies                   | 30                                                                                               |
| Case          | Case                               | 42 mm                                                                                            |
|               | Case thickness                     | 13.25 mm                                                                                         |
|               | Crystal                            | Glareproofed sapphire crystal on both sides                                                      |
|               | Caseback                           | See-through caseback                                                                             |
|               | Water-resistance                   | 5 ATM                                                                                            |
| Bracelet      | Buckle                             | Butterfly buckle                                                                                 |
|               | Width of strap (lugs / buckle)     | 22 / 18 mm                                                                                       |
| Other feature |                                    | Peripheral oscillating weight                                                                    |



**A1100/1**

Stainless steel  
Central brass dial, silver color with central stamped vertical lines and circular brushed outside ring.  
Black alligator strap  
Stainless steel buckle



**A1100/2**

Stainless steel  
Central brass dial, anthracite color with central stamped vertical lines and circular brushed outside ring.  
Black alligator strap  
Stainless steel buckle



**A1100/3**

Stainless steel  
Central brass dial, black color with central stamped vertical lines and circular brushed outside ring.  
Black alligator strap  
Stainless steel buckle



**A1102/1**

Stainless steel with titanium PVD coating\*  
Central brass dial, black color with central stamped vertical lines and circular brushed outside ring.  
Black alligator strap  
Stainless steel buckle with titanium PVD coating\*



The LAB collection enriches it with the GMT function at 6 o'clock with night/day indicator. Its stainless steel 42 x 42 mm cushion-shaped case unveils a three-dimensional dial achieved by the multi-level structure and is available in silver-toned, anthracite or black versions. The cut-out hour-markers with SuperLuminova are applied to a sapphire crystal ring. The unusual use of this transparent element was specifically intended to enable the owner of the LAB watch to observe the motion of the oscillating weight while reading the time. Its Manufacture automatic movement enables the LAB to combine technical perfection with a captivating and innovative design, remaining true to the DNA of the brand with its signature "dial in motion".

## Collection specifications

|               |                                    |                                                                                                                                                             |
|---------------|------------------------------------|-------------------------------------------------------------------------------------------------------------------------------------------------------------|
| Movement      | Mechanical automatic               | P-421-H / In-house caliber                                                                                                                                  |
|               | Function                           | Central hour, minute, second, big date at 12 o'clock, dual time at 6 o'clock on 12 hours with night/day indicator, automatic winding-mechanism on dial-side |
|               | Special feature                    | Peripheral technology                                                                                                                                       |
|               | Vibrations per hour                | 28'800 (4 Hz)                                                                                                                                               |
|               | Autonomy in hours (fully wound up) | 42 hours                                                                                                                                                    |
|               | Number of rubies                   | 30 jewels                                                                                                                                                   |
| Case          | Case                               | Ø 42 mm                                                                                                                                                     |
|               | Case thickness                     | 13.25 mm                                                                                                                                                    |
|               | Crystal                            | Glareproofed sapphire crystal on both sides                                                                                                                 |
|               | Caseback                           | See-through caseback                                                                                                                                        |
|               | Water-resistance                   | 5 ATM                                                                                                                                                       |
| Bracelet      | Buckle                             | Butterfly buckle                                                                                                                                            |
|               | Width of strap (lugs / buckle)     | 22 / 18 mm                                                                                                                                                  |
| Other feature |                                    | Peripheral oscillating weight                                                                                                                               |



**A1101/1**

Stainless steel  
Central brass dial, silver color with central stamped vertical lines and circular brushed outside ring. Black alligator strap  
Stainless steel buckle



**A1101/2**

Stainless steel  
Central brass dial, anthracite color with central stamped vertical lines and circular brushed outside ring. Black alligator strap  
Stainless steel buckle



**A1101/3**

Stainless steel  
Central brass dial, black color with central stamped vertical lines and circular brushed outside ring. Black alligator strap  
Stainless steel buckle



**A1101/4**

Stainless steel  
Central brass dial, blue color with central stamped vertical lines and circular brushed outside ring. Blue alligator strap  
Stainless steel buckle







# TURBINE





P-331 / In-house caliber

In 2019 Perrelet proudly celebrates the 10th anniversary of its iconic Turbine model.

The Turbine EVO is the culmination of a series of technical developments combined with a refined sport design.

Equipped with the new generation of the in-house Manufacture movement, Caliber P-331, the Turbine EVO model has a new case construction which now offers a stainless steel bracelet version.

### Collection specifications

|               |                                    |                                                     |
|---------------|------------------------------------|-----------------------------------------------------|
| Movement      | Mechanical automatic               | P-331 / In-house caliber                            |
|               | Function                           | Central hands indicating hours, minutes and seconds |
|               | Special feature                    | Turbine Technology                                  |
|               | Vibrations per hour                | 28,800 (4 Hz)                                       |
|               | Autonomy in hours (fully wound up) | 42 hours                                            |
|               | Number of rubies                   | 25 jewels                                           |
| Case          | Case                               | Ø 44 mm                                             |
|               | Case thickness                     | 13 mm                                               |
|               | Crystal                            | Glareproofed sapphire crystal on both sides         |
|               | Caseback                           | See-through caseback                                |
|               | Water-resistance                   | 5 ATM                                               |
| Bracelet      | Buckle                             | Folding clasp buckle                                |
|               | Width of strap (lugs / buckle)     | 25 / 20 mm                                          |
| Other feature |                                    | Turbine on the dial side                            |

\* PVD (Physical Vapor Deposition) coating

The PVD coating used by Perrelet is a high technology coating made by ion bombardment in vacuum. It is a 2-micron thick layer of carbon that has a very high wear resistance and antifriction coefficient. Its hardness offers at the same time a silky aspect particularly adapted to the Perrelet product line.



**A4062/1**

Stainless steel  
Black Turbine (12 blades), red under-dial.  
Luminous Arabic numerals, hour-markers and hands  
Stainless steel bracelet  
Stainless steel folding buckle



**A4062/2**

Stainless steel  
Black Turbine (12 blades), blue under-dial.  
Luminous Arabic numerals, hour-markers and hands  
Stainless steel bracelet  
Stainless steel folding buckle



**A4062/A**

Stainless steel with black PVD coating\*  
Black Turbine (12 blades), red under-dial, Arabic numerals and hour-markers.  
Bi-material rubber, black calf strap  
Stainless steel folding buckle



**A4062/B**

Stainless steel with black PVD coating\*  
Black Turbine (12 blades), blue under-dial, Arabic numerals and hour-markers.  
Bi-material rubber, black calf strap  
Stainless steel folding buckle



## TURBINE EVO



### A4063/1

Stainless steel with black PVD coating\*  
Black Turbine (12 blades), red under-dial.  
Luminous Arabic numerals, hour-markers and hands  
Stainless steel bracelet with black PVD coating\*  
Stainless steel folding buckle with black PVD coating\*



### A4063/2

Stainless steel with black PVD coating\*  
Black Turbine (12 blades), blue under-dial.  
Luminous Arabic numerals, hour-markers and hands  
Stainless steel bracelet with black PVD coating\*  
Stainless steel folding buckle with black PVD coating\*



### A4063/A

Stainless steel with black PVD coating\*  
Black Turbine (12 blades), red under-dial, Arabic numerals and hour-markers, luminous hands  
Bi-material rubber, black calf strap  
Stainless steel folding buckle with black PVD coating\*



### A4063/B

Stainless steel with black PVD coating\*  
Black Turbine (12 blades), blue under-dial, Arabic numerals and hour-markers, luminous hands  
Bi-material rubber, black calf strap  
Stainless steel folding buckle with black PVD coating\*





**A4064/1**

Stainless steel with 4N rose gold PVD coating\*  
 Black Turbine (12 blades), 4N rose gold under-dial.  
 Luminous Arabic numerals, hour-markers and hands  
 Stainless steel with 4N rose gold PVD coating\*  
 Stainless steel folding buckle with 4N rose gold PVD coating\*



**A4064/A**

Stainless steel with 4N rose gold PVD coating\*  
 Black Turbine (12 blades), 4N rose gold under-dial.  
 Luminous Arabic numerals, hour-markers and hands  
 Bi-material rubber, calf strap  
 Stainless steel folding buckle with 4N rose gold PVD coating\*





## TURBINE LADY



P-331 / In-house caliber

The Turbine Lady collection with its steel/PVD-coated steel case, available in 38 mm and 41 mm diameter, is imbued with a seductive sense of fascination and mystery. The turbine becomes the custodian of a precious treasure, since its rotation reveals the stunning beauty of an under-dial adorned with a sunray motif composed of exquisitely diamonds set. The Turbine Lady collection opts for classic black or white variations, each fitted with a matching rubber strap.

### Collection specifications

|               |                                    |                                                          |
|---------------|------------------------------------|----------------------------------------------------------|
| Movement      | Mechanical automatic               | P-331 / In-house caliber                                 |
|               | Function                           | Central hands indicating hours, minutes and seconds      |
|               | Vibrations per hour                | 28,800 (4 Hz)                                            |
|               | Autonomy in hours (fully wound up) | 42 hours                                                 |
|               | Number of rubies                   | 25 jewels                                                |
| Case          | Case                               | Ø 38 mm A2053/A - A2057/A<br>Ø 41 mm A2042/AA - A2046/AA |
|               | Case thickness                     | 12.77 mm                                                 |
|               | Crystal                            | Glareproofed sapphire crystal on both sides              |
|               | Caseback                           | See-through caseback                                     |
|               | Water-resistance                   | 5 ATM                                                    |
| Bracelet      | Buckle                             | Folding clasp with push-buttons                          |
|               | Width of strap (lugs / buckle)     | 24 / 18 mm                                               |
| Other feature |                                    | Turbine on the dial side                                 |



**A2053/A**

Stainless steel  
White Turbine (12 blades), white sunray-patterned dial base set with diamonds. Arabic numerals, hour-markers and hands  
White rubber strap  
Stainless steel buckle  
60 diamonds (0.18 ct) Top Wesselton VS1



**A2057/A**

Stainless steel with black PVD coating\*  
Black Turbine (12 blades), black sunray-patterned dial base set with diamonds. Arabic numerals, hour-markers and hands  
Black rubber strap  
Stainless steel buckle with black PVD coating  
60 diamonds (0.18 ct) Top Wesselton VS1



**A2042/AA**

Stainless steel  
White Turbine (12 blades), white sunray-patterned dial base set with diamonds. Arabic numerals, hour-markers and hands  
White rubber strap  
Stainless steel buckle  
72 diamonds (0.36 ct) Top Wesselton VS1



**A2046/AA**

Stainless steel with black PVD coating\*  
Black Turbine (12 blades), black sunray-patterned dial base set with diamonds. Arabic numerals, hour-markers and hands  
Black rubber strap  
Stainless steel buckle with black PVD coating  
72 diamonds (0.36 ct) Top Wesselton VS1



P-331 / In-house caliber

Deriving their aesthetical inspiration from the field of aeronautics, our engineers and watch designers have created a new adaptation of the Perrelet " Double Rotor ". The double rotor, transformed for the occasion into a turbine fitted with 12 blades made of aluminium, covers the whole of the dial and slips beneath an interior bezel. On the dial surface, stripes accentuate the optical effect and make the impact of this model all the more sensational. Disconnected from the movement oscillating weight, the turbine spins at full speed and creates spectacular visual effects. In this pioneer and emblematic model, the turbine is housed in a concave-shaped case of 44 mm-diameter. The crown, specially machined and integrated within the case, respects these perfect lines.

## Collection specifications

|               |                                    |                                                     |
|---------------|------------------------------------|-----------------------------------------------------|
| Movement      | Mechanical automatic               | P-331 / In-house caliber                            |
|               | Function                           | Central hands indicating hours, minutes and seconds |
|               | Special feature                    | Turbine Technology                                  |
|               | Vibrations per hour                | 28,800 (4 Hz)                                       |
|               | Autonomy in hours (fully wound up) | 42 hours                                            |
|               | Number of rubies                   | 25 jewels                                           |
| Case          | Case                               | Ø 44 mm                                             |
|               | Case thickness                     | 13 mm                                               |
|               | Crystal                            | Glareproofed sapphire crystal on both sides         |
|               | Caseback                           | See-through caseback                                |
|               | Water-resistance                   | 5 ATM                                               |
| Bracelet      | Buckle                             | Folding clasp buckle                                |
|               | Width of strap (lugs / buckle)     | 25 / 20 mm                                          |
| Other feature |                                    | Turbine on the dial side                            |

\* PVD (Physical Vapor Deposition) coating

The PVD coating used by Perrelet is a high technology coating made by ion bombardment in vacuum. It is a 2-micron thick layer of carbon that has a very high wear resistance and antifriction coefficient. Its hardness offers at the same time a silky aspect particularly adapted to the Perrelet product line.



#### A1047/1

Stainless steel with black PVD coating\*  
Black Turbine (12 blades), red under-dial.  
Luminous Arabic numerals, hour-markers and hands  
Black rubber strap  
Stainless steel buckle with black PVD coating\*



#### A1047/2

Stainless steel with black PVD coating\*  
Black Turbine (12 blades), black under-dial.  
Luminous Arabic numerals, hour-markers and hands  
Black rubber strap  
Stainless steel buckle with black PVD coating\*



#### A1047/4

Stainless steel with black PVD coating\*  
Black Turbine (12 blades), silver under-dial.  
Luminous Arabic numerals, hour-markers and hands  
Black rubber strap  
Stainless steel buckle with black PVD coating\*



#### A1047/5

Stainless steel with black PVD coating\*  
Black Turbine (12 blades), blue under-dial.  
Luminous Arabic numerals, hour-markers and hands  
Black rubber strap  
Stainless steel buckle with black PVD coating\*



#### A1047/9

Stainless steel with black PVD coating\*  
Black Turbine (12 blades), black and silver under-dial, Arabic numerals and hour-markers, luminous hands  
Black rubber strap  
Stainless steel buckle with black PVD coating\*



#### A1047/10

Stainless steel with black PVD coating\*  
Black Turbine (12 blades), black and golden under-dial, Arabic numerals and hour-markers  
Black rubber strap  
Stainless steel buckle with black PVD coating\*



## TURBINE XL



P-331 / In-house caliber

The attractive game played by Turbine watches has also been applied to models measuring 48 mm in diameter. The Turbine XL interpretations feature several remarkable character traits, including finely honed and oblique-cut turbine blades, a case-middle structure extending onto the bezel, and lugs reinforced by central inserts.

### Collection specifications

|               |                                    |                                                     |
|---------------|------------------------------------|-----------------------------------------------------|
| Movement      | Mechanical automatic               | P-331 / In-house caliber                            |
|               | Function                           | Central hands indicating hours, minutes and seconds |
|               | Special feature                    | Turbine Technology                                  |
|               | Vibrations per hour                | 28,800 (4 Hz)                                       |
|               | Autonomy in hours (fully wound up) | 42 hours                                            |
|               | Number of rubies                   | 25 jewels                                           |
| Case          | Case                               | Ø 48 mm                                             |
|               | Case thickness                     | 14.30 mm                                            |
|               | Crystal                            | Glareproofed sapphire crystal on both sides         |
|               | Caseback                           | See-through caseback                                |
|               | Water-resistance                   | 5 ATM                                               |
| Bracelet      | Buckle                             | Pin buckle                                          |
|               | Width of strap (lugs / buckle)     | 28 / 24 mm                                          |
| Other feature | Turbine on the dial side           |                                                     |

\* PVD (Physical Vapor Deposition) coating

The PVD coating used by Perrelet is a high technology coating made by ion bombardment in vacuum. It is a 2-micron thick layer of carbon that has a very high wear resistance and antifriction coefficient. Its hardness offers at the same time a silky aspect particularly adapted to the Perrelet product line.





**A1051/1**

Stainless steel with black PVD coating\*  
Black Turbine (12 blades), black under-dial.  
Luminous Arabic numerals, hour-markers and hands  
Black rubber strap  
Stainless steel buckle with black PVD coating\*



**A1051/4**

Stainless steel with black PVD coating\*  
Black Turbine (12 blades), silver under-dial.  
Luminous Arabic numerals, hour-markers and hands  
Black rubber strap  
Stainless steel buckle with black PVD coating\*



**A1051/5**

Stainless steel with black PVD coating\*  
Black Turbine (12 blades), blue under-dial.  
Luminous Arabic numerals, hour-markers and hands  
Black rubber strap  
Stainless steel buckle with black PVD coating\*



**A1051/9**

Stainless steel with black PVD coating\*  
Black Turbine (12 blades), red under-dial.  
Luminous Arabic numerals, hour-markers and hands  
Black rubber strap  
Stainless steel buckle with black PVD coating\*



**A1051/10**

Stainless steel with black PVD coating\*  
Black Turbine (12 blades), black and silver under-dial, Arabic numerals and hour-markers, luminous hands  
Black rubber strap  
Stainless steel buckle with black PVD coating\*



**A1051/11**

Stainless steel with black PVD coating\*  
Black Turbine (12 blades), black and golden under-dial, Arabic numerals and hour-markers  
Black rubber strap  
Stainless steel buckle with black PVD coating\*



## TURBINE YACHT – TURBINE DIVER



P-331 / In-house caliber

The inspiration comes from the sea and from its color schemes. This new collection reinterprets the Turbine Diver model for sailing fans and seabed explorers. The Turbine Yacht collection features watches suitable to depths of 30 ATM with a wind rose rotating ring allowing the orientation. The 47 mm case has been made in steel in its natural shade or with a black or bronze PVD coating. The under-dial adopts a yachting-inspired trim in a perfect navy stripe.

### Collection specifications

|               |                                    |                                                                                                  |
|---------------|------------------------------------|--------------------------------------------------------------------------------------------------|
| Movement      | Movement                           | P-331 / In-house caliber                                                                         |
|               | Function                           | Central hands indicating hours, minutes and seconds. Bidirectional rotating dial ring. Wind rose |
|               | Vibrations per hour                | 28,800 (4 Hz)                                                                                    |
|               | Autonomy in hours (fully wound up) | 42 hours                                                                                         |
|               | Number of rubies                   | 25 jewels                                                                                        |
| Case          | Case                               | Ø 47 mm                                                                                          |
|               | Case thickness                     | 15.45 mm                                                                                         |
|               | Crystal                            | Glareproofed sapphire crystal on both sides                                                      |
|               | Caseback                           | See-through caseback                                                                             |
|               | Water-resistance                   | 30 ATM                                                                                           |
| Bracelet      | Buckle                             | Pin buckle                                                                                       |
|               | Width of strap (lugs / buckle)     | 28 / 24 mm                                                                                       |
| Other feature |                                    | Turbine on the dial side                                                                         |

\* PVD (Physical Vapor Deposition) coating

The PVD coating used by Perrelet is a high technology coating made by ion bombardment in vacuum. It is a 2-micron thick layer of carbon that has a very high wear resistance and antifriction coefficient. Its hardness offers at the same time a silky aspect particularly adapted to the Perrelet product line.



**A1066/3**

Stainless steel  
Blue Turbine (12 blades), luminous under-dial.  
Luminous Arabic numerals, hour-markers and  
hands  
Blue rubber strap  
Stainless steel buckle



**A1066/4**

Stainless steel  
Black Turbine (12 blades), black and silver  
decorating applique. Luminous Arabic numerals,  
hour-markers and hands  
Black rubber strap  
Stainless steel buckle



**A1088/1**

Stainless steel with black PVD coating\*  
Black Turbine (12 blades), blue and light blue  
decorating applique, Arabic numerals and  
hour-markers, luminous hands  
Blue rubber strap  
Stainless steel buckle with black PVD coating\*



**A1089/1**

Stainless steel with bronze PVD coating\*  
Black Turbine (12 blades), black and bronze  
decorating applique, Arabic numerals and  
hour-markers  
Black rubber strap  
Stainless steel buckle with bronze PVD coating\*



P-331 / In-house caliber

Perrelet's watchmaking expertise is given free rein in the new Turbine Pilot collection, with its four timepieces featuring the fusion of the distinctive Perrelet turbine and the circular slide-rule used in aviation. The collection draws inspiration from the world of flight and has been given a 48 mm-diameter case framing dials that both inspire and pay homage to the aeronautical symbols and colors. The luminescent white hour-markers and four Arabic numerals meticulously applied on the sapphire dial, above the Turbine, make a striking contrast with the background: a combination of typical aviation colors that is further intensified when the Turbine is in action. Every detail of the collection expresses its refined engineering, from the case finish to the unique leather strap designed for an ultra-comfortable fit.

### Collection specifications

|               |                                    |                                                                                                                                |
|---------------|------------------------------------|--------------------------------------------------------------------------------------------------------------------------------|
| Movement      | Movement                           | P-331 / In-house caliber                                                                                                       |
|               | Function                           | Central hands indicating hours, minutes and seconds. Bidirectional rotating dial ring. Circular aviation slide rule. Countdown |
|               | Special feature                    | Turbine Technology                                                                                                             |
|               | Vibrations per hour                | 28,800 (4 Hz)                                                                                                                  |
|               | Autonomy in hours (fully wound up) | 42 hours                                                                                                                       |
|               | Number of rubies                   | 25 jewels                                                                                                                      |
| Case          | Case                               | Ø 48 mm                                                                                                                        |
|               | Case thickness                     | 13.65 mm                                                                                                                       |
|               | Crystal                            | Glareproofed sapphire crystal on both sides                                                                                    |
|               | Caseback                           | See-through caseback                                                                                                           |
|               | Water-resistance                   | 5 ATM                                                                                                                          |
| Bracelet      | Buckle                             |                                                                                                                                |
|               | Width of strap (lugs / buckle)     | 26 / 24 mm                                                                                                                     |
| Other feature |                                    | Turbine on the dial side                                                                                                       |

\* PVD (Physical Vapor Deposition) coating

The PVD coating used by Perrelet is a high technology coating made by ion bombardment in vacuum. It is a 2-micron thick layer of carbon that has a very high wear resistance and antifriction coefficient. Its hardness offers at the same time a silky aspect particularly adapted to the Perrelet product line.



**A1085/1**

Stainless steel

Black Turbine (12 blades), black under-dial with yellow stripes, top sapphire dial. Luminous Arabic numerals, hour-markers and hands

Black rubber strap

Stainless steel buckle

**A1086/1**

Stainless steel with black PVD coating\*

Black Turbine (12 blades), black under-dial with yellow stripes, top sapphire dial. Luminous Arabic numerals, hour-markers and hands

Black rubber strap

Stainless steel buckle with black PVD coating\*

**A1085/1A**

Stainless steel

Black Turbine (12 blades), black under-dial with yellow stripes, top sapphire dial. Luminous Arabic numerals, hour-markers and hands

Black bi-material (PU/calfskin) strap with grey stitching

Stainless steel buckle

**A1086/1A**

Stainless steel with black PVD coating\*

Black Turbine (12 blades), black under-dial with yellow stripes, top sapphire dial. Luminous Arabic numerals, hour-markers and hands

Black bi-material (PU/calfskin) strap with grey stitching

Stainless steel buckle with black PVD coating\*

**A1085/2A**

Stainless steel

Black Turbine (12 blades), black under-dial with yellow stripes, top sapphire dial. Luminous Arabic numerals, hour-markers and hands

Black bi-material (PU/calfskin) strap with white stitching

Stainless steel buckle







**A1086/2**

Stainless steel with black PVD coating\*  
Black Turbine (12 blades), black under-dial with yellow stripes, top sapphire dial. Luminous Arabic numerals, hour-markers and hands  
Black bi-material (PU/alligator) strap with black stitching  
Stainless steel buckle with black PVD coating\*



**A1094/2**

Stainless steel with brown PVD coating\*, bezel with black PVD coating\*  
Brown Turbine (12 blades), black under-dial with yellow stripes, top sapphire dial. Luminous Arabic numerals, hour-markers and hands  
Brown bi-material (PU/Alligator) strap with brown stitching  
Stainless steel buckle with brown PVD coating\*



**A1096/1**

Grand Raid  
Stainless steel with black PVD coating  
Black Turbine (12 blades), black under-dial with beige stripes, top sapphire dial. Luminous Arabic numerals, hour-markers and hands  
Beige bi-material (PU/Nylon) strap with black stitching  
Stainless steel buckle with black PVD coating\*  
**Limited Edition (100 pieces)**



**A1095/1**

Furtive  
Stainless steel with black PVD coating  
Black Turbine (12 blades), dark Grey under-dial with black stripes, top sapphire dial. Luminous Arabic numerals, hour-markers and hands  
Black bi-material (PU/alligator) strap with black stitching  
Stainless steel buckle with black PVD coating\*  
**Limited Edition (100 pieces)**



**A1095/2**

Azzuro  
Stainless steel with black PVD coating  
Black Turbine (12 blades), black under-dial with blue stripes, top sapphire dial. Luminous Arabic numerals, hour-markers and hands  
Black bi-material (PU/alligator) strap with black stitching  
Stainless steel buckle with black PVD coating\*  
**Limited Edition (100 pieces)**



## TURBINE SKELETON



P-381 / In-house caliber

Perrelet takes up a new challenge, a fusion of watchmaking know-how and design to present a unique new model that combines the Turbine collection's quintessential ten-blade titanium wheel with a skeleton movement. The brand's cutting-edge engineering flair is showcased in the details of the movement apertures that outline each component to highlight its beauty and perfection. The skeleton movement is revealed in all its charm when the turbine fitted over the dial turns freely at full speed. The collection has been given a newly engineered 44 mm-diameter case in steel, steel with a black PVD coating, or with a precious 4N rose gold bezel.

### Collection specifications

|               |                                    |                                                     |
|---------------|------------------------------------|-----------------------------------------------------|
| Movement      | Mechanical automatic               | P-381 / In-house caliber                            |
|               | Function                           | Central hands indicating hours, minutes and seconds |
|               | Special feature                    | Turbine Technology, Manufacture skeleton-working    |
|               | Vibrations per hour                | 28,800 (4 Hz)                                       |
|               | Autonomy in hours (fully wound up) | 42 hours                                            |
|               | Number of rubies                   | 25 jewels                                           |
| Case          | Case                               | Ø 44 mm                                             |
|               | Case thickness                     | 13.30 mm                                            |
|               | Crystal                            | Glareproofed sapphire crystal on both sides         |
|               | Caseback                           | See-through caseback                                |
|               | Water-resistance                   | 5 ATM                                               |
| Bracelet      | Buckle                             | Pin buckle                                          |
|               | Width of strap (lugs/buckle)       | 26 / 24 mm                                          |
| Other feature |                                    | Turbine on the dial side                            |

\* PVD (Physical Vapor Deposition) coating

The PVD coating used by Perrelet is a high technology coating made by ion bombardment in vacuum. It is a 2-micron thick layer of carbon that has a very high wear resistance and antifriction coefficient. Its hardness offers at the same time a silky aspect particularly adapted to the Perrelet product line.



**A1082/1**

Stainless steel middle case, bezel and back with black PVD coating\*

Silver Turbine (10 blades), skeleton under-dial. Luminous Arabic numerals, hour-markers and hands

Black rubber strap

Stainless steel buckle



**A1081/1**

Stainless steel with black PVD coating\*

Black Turbine (10 blades), skeleton under-dial. Luminous Arabic numerals, hour-markers and hands

Black rubber strap

Stainless steel buckle with black PVD coating\*



**A3038/1**

Stainless steel case with black PVD coating\*, rose gold (18 cts, 4N) bezel

Black Turbine (10 blades), skeleton under-dial. Rose gold (18 cts, 4N) top rotor ring. Luminous Arabic numerals, hour-markers and hands

Black rubber strap

Stainless steel buckle with black PVD coating\*



**A1082/1A**

Stainless steel middle case, bezel and back with black PVD coating\*

Silver Turbine (10 blades), skeleton under-dial. Luminous Arabic numerals, hour-markers and hands

Black bi-material (PU/calfskin) strap with grey stitching

Stainless steel buckle



**A1081/1A**

Stainless steel with black PVD coating\*

Black Turbine (10 blades), skeleton under-dial. Luminous Arabic numerals, hour-markers and hands

Black bi-material (PU/calfskin) strap with grey stitching

Stainless steel buckle with black PVD coating\*



**A3038/1A**

Stainless steel with black PVD coating\*, rose gold (18 cts, 4N) bezel

Black Turbine (10 blades), skeleton under-dial. Rose gold (18 cts, 4N) top rotor ring. Luminous Arabic numerals, hour-markers and hands

Black bi-material (PU/calfskin) strap with grey stitching

Stainless steel buckle with black PVD coating\*





P-361 / Perrelet Exclusive Chronograph

For the first time since its launch in 2009, Perrelet's iconic Turbine collection welcomes a horological complication; a chronograph, offering a further demonstration of the brand's technical expertise. The additional function is clearly displayed on the dial of the Turbine Chrono automatic model without detracting from the singular identity of the collection. The chronograph measurements are provided by a central seconds chronograph hand and a particularly innovative 60-minute counter. A graduated mobile disk turns in the center of a fixed ring marked with a red arrow bearing the inscription "min" and pointing to the recorded times.

### Collection specifications

|               |                                    |                                                                                                                                    |
|---------------|------------------------------------|------------------------------------------------------------------------------------------------------------------------------------|
| Movement      | Movement                           | P-361 / Perrelet Exclusive Chronograph                                                                                             |
|               | Function                           | Central hands indicating hours, minutes and chronograph seconds. Sapphire central 60-minute chronograph counter. Date at 6 o'clock |
|               | Special feature                    | Turbine Technology                                                                                                                 |
|               | Vibrations per hour                | 28,800 (4 Hz)                                                                                                                      |
|               | Autonomy in hours (fully wound up) | 42 hours                                                                                                                           |
|               | Number of rubies                   | 41 jewels                                                                                                                          |
| Case          | Case                               | Ø 47 mm                                                                                                                            |
|               | Case thickness                     | 16 mm                                                                                                                              |
|               | Crystal                            | Glareproofed sapphire crystal on both sides                                                                                        |
|               | Caseback                           | See-through caseback                                                                                                               |
|               | Water-resistance                   | 5 ATM                                                                                                                              |
| Bracelet      | Buckle                             | Pin buckle                                                                                                                         |
|               | Width of strap (lugs/buckle)       | 27 / 24 mm                                                                                                                         |
| Other feature |                                    | Turbine on the dial side                                                                                                           |

\* PVD (Physical Vapor Deposition) coating

The PVD coating used by Perrelet is a high technology coating made by ion bombardment in vacuum. It is a 2-micron thick layer of carbon that has a very high wear resistance and antifriction coefficient. Its hardness offers at the same time a silky aspect particularly adapted to the Perrelet product line.





**A1074/3**

Stainless steel, bezel ring with black PVD coating  
Black Turbine (12 blades), black under-dial and white dial ring. Luminous Arabic numerals, hour-markers and hands  
Black rubber strap  
Stainless steel buckle with black PVD coating\*



**A1075/3**

Stainless steel with black PVD coating  
Black Turbine (12 blades), black under-dial and black dial ring. Luminous Arabic numerals, hour-markers and hands  
Black rubber strap  
Stainless steel buckle with black PVD coating\*



**A3036/2**

Stainless steel with black PVD coating\*, rose gold (18 cts, 4N) bezel ring  
Rose gold (18 cts, 4N) Turbine (12 blades), black under-dial. Rose gold (18 cts, 4N) center, black dial ring. Luminous Arabic numerals, hour-markers and hands  
Black rubber strap  
Stainless steel buckle with black PVD coating\*



**A3036/1**

Stainless steel with black PVD coating\*, rose gold (18 cts, 4N) bezel ring  
Black Turbine (12 blades), black under-dial. Rose gold (18 cts, 4N) top rotor ring, black dial ring. Luminous Arabic numerals, hour-markers and hands  
Black rubber strap  
Stainless steel buckle with black PVD coating\*



**A1079/1**

Stainless steel with black PVD coating\*  
Black Turbine (12 blades), black under-dial and dial ring. Luminous Arabic numerals, hour-markers and hands  
Black rubber strap  
Stainless steel buckle with black PVD coating\*



## TURBINE CHRONO SPORT



P-361 / Perrelet Exclusive Chronograph

For the first time since its launch in 2009, Perrelet's iconic Turbine collection welcomes a horological complication; a chronograph, offering a further demonstration of the brand's technical expertise. The additional function is clearly displayed on the dial of the Turbine Chrono automatic model without detracting from the singular identity of the collection. The chronograph measurements are provided by a central seconds chronograph hand and a particularly innovative 60-minute counter. A graduated mobile disk turns in the center of a fixed ring marked with a red arrow bearing the inscription "min" and pointing to the recorded times.

### Collection specifications

|                 |                                    |                                                                                                                                            |
|-----------------|------------------------------------|--------------------------------------------------------------------------------------------------------------------------------------------|
| Movement        | Mechanical automatic               | P-361 / Perrelet Exclusive Chronograph                                                                                                     |
|                 | Function                           | Central hands indicating hours, minutes and chronograph seconds. Central sapphire disk as 60-minute chronograph counter. Date at 6 o'clock |
|                 | Special feature                    | Turbine technology                                                                                                                         |
|                 | Vibrations per hour                | 28'800 (4 Hz)                                                                                                                              |
|                 | Autonomy in hours (fully wound up) | 42 hours                                                                                                                                   |
|                 | Number of rubies                   | 41 jewels                                                                                                                                  |
| Case            | Case                               | Ø 47 mm                                                                                                                                    |
|                 | Case thickness                     | 16 mm                                                                                                                                      |
|                 | Crystal                            | Glareproofed sapphire crystal on both sides                                                                                                |
|                 | Caseback                           | See-through caseback                                                                                                                       |
|                 | Water-resistance                   | 5 ATM                                                                                                                                      |
| Bracelet        | Buckle                             | Folding buckle                                                                                                                             |
|                 | Width of strap (lugs / buckle)     | 27 / 24 mm                                                                                                                                 |
| Other feature   |                                    | Turbine on the dial side                                                                                                                   |
| Limited edition |                                    | Limited to 77 pieces for each model                                                                                                        |



**A1079/2**

Stainless steel with black PVD coating\*  
 Black Turbine (10 blades) with honeycomb pattern,  
 black under-dial with soccer ball pattern and black  
 dial ring. Luminous Arabic numerals, hour-markers  
 and hands  
 Black bi-material (PU/Nylon) strap with black  
 stitching  
 Stainless steel buckle with black PVD coating\*



**A1079/3**

Stainless steel with black PVD coating\*  
 Black Turbine (10 blades) with honeycomb pattern,  
 black under-dial with soccer ball pattern and black  
 dial ring. Luminous Arabic numerals, hour-markers  
 and hands  
 Black bi-material (PU/Nylon) strap with red  
 stitching  
 Stainless steel buckle with black PVD coating\*



## TURBINE GMT



P-401 / In-house caliber

Circling the globe with its Turbine is the new dream evoked by Perrelet with its Turbine GMT collection. In step with wrist movements, the ten-blade Turbine spinning freely above the dial reveals a globe engraved on a Côtes de Genève décor. Equipped with a 24-hour dual-time function, the Turbine GMT collection once more combines a horological complication with its iconic turbine concept and yet again proves that its star collection lends itself to all kinds of variations. Designed for keen sportsmen or travellers, the Turbine GMT is available with a 44 mm steel or black PVD-coated steel case, fitted with a blue or black rubber or leather strap.

### Collection specifications

|               |                                    |                                                                           |
|---------------|------------------------------------|---------------------------------------------------------------------------|
| Movement      | Mechanical automatic               | P-401 / In-house caliber                                                  |
|               | Function                           | Central hands indicating hours, minutes and seconds. Second time zone 24h |
|               | Special feature                    | Turbine Technology                                                        |
|               | Vibrations per hour                | 28,800 (4 Hz)                                                             |
|               | Autonomy in hours (fully wound up) | 42 hours                                                                  |
|               | Number of rubies                   | 25 jewels                                                                 |
| Case          | Case                               | Ø 44 mm                                                                   |
|               | Case thickness                     | 13.30 mm                                                                  |
|               | Crystal                            | Glareproofed sapphire crystal on both sides                               |
|               | Caseback                           | See-through caseback                                                      |
|               | Water-resistance                   | 5 ATM                                                                     |
| Bracelet      | Buckle                             | Pin buckle                                                                |
|               | Width of strap (lugs/buckle)       | 26 / 24 mm                                                                |
| Other feature |                                    | Turbine on the dial side                                                  |

\* PVD (Physical Vapor Deposition) coating

The PVD coating used by Perrelet is a high technology coating made by ion bombardment in vacuum. It is a 2-micron thick layer of carbon that has a very high wear resistance and antifriction coefficient. Its hardness offers at the same time a silky aspect particularly adapted to the Perrelet product line.





**A1093/1**

Stainless steel with black PVD coating\*  
Black Turbine (10 blades), "Côtes de Genève décor" under-dial with an engraved worldmap.  
Black and white dial ring. Luminous Arabic numerals, hour-markers and hands  
Black rubber strap  
Stainless steel buckle with black PVD coating\*



**A1093/1A**

Stainless steel with black PVD coating\*  
Black Turbine (10 blades), "Côtes de Genève décor" under-dial with an engraved worldmap.  
Black and white dial ring. Luminous Arabic numerals, hour-markers and hands  
Black bi-material (PU/alligator) strap  
Stainless steel buckle with black PVD coating\*



**A1092/1**

Stainless steel  
Blue Turbine (10 blades), "Côtes de Genève décor" under-dial with an engraved worldmap. Blue and white dial ring. Luminous Arabic numerals, hour-markers and hands  
Blue rubber strap  
Stainless steel buckle



**A1092/1A**

Stainless steel  
Blue Turbine (10 blades), "Côtes de Genève décor" under-dial with an engraved worldmap. Blue and white dial ring. Luminous Arabic numerals, hour-markers and hands  
Blue bi-material (PU/alligator) strap with white stitching  
Stainless steel buckle





## TURBINE GMT WORLDTIMER



P-401 / In-house caliber

Circling the globe with its Turbine is the new dream evoked by Perrelet with its Turbine GMT collection. In step with wrist movements, the ten-blade Turbine spinning freely above the dial reveals a globe engraved on a Côtes de Genève décor. Equipped with a 24-hour dual-time function, the Turbine GMT collection once more combines a horological complication with its iconic turbine concept and yet again proves that its star collection lends itself to all kinds of variations. Designed for keen sportsmen or travellers, the Turbine GMT is available with a 44 mm steel or black PVD-coated steel case, fitted with a blue or black rubber or leather strap.

### Collection specifications

|                 |                                    |                      |                                                                                                                                               |
|-----------------|------------------------------------|----------------------|-----------------------------------------------------------------------------------------------------------------------------------------------|
| Movement        | Movement                           | Mechanical automatic | P-401 / In-house caliber                                                                                                                      |
|                 | Function                           |                      | Central hands indicating hours, minutes and seconds. Second time zone 24h - day/night indicator. Bidirectional inner dial ring with 24 cities |
|                 | Special feature                    |                      | Turbine technology                                                                                                                            |
|                 | Vibrations per hour                |                      | 28'800 (4 Hz)                                                                                                                                 |
|                 | Autonomy in hours (fully wound up) |                      | 42 hours                                                                                                                                      |
|                 | Number of rubies                   |                      | 25 jewels                                                                                                                                     |
| Case            | Case                               |                      | Ø 48 mm                                                                                                                                       |
|                 | Case thickness                     |                      | 13.65 mm                                                                                                                                      |
|                 | Crystal                            |                      | Glareproofed sapphire crystal on both sides                                                                                                   |
|                 | Caseback                           |                      | See-through caseback                                                                                                                          |
|                 | Water-resistance                   |                      | 5 ATM                                                                                                                                         |
| Bracelet        | Buckle                             |                      | Folding buckle                                                                                                                                |
|                 | Width of strap (lugs / buckle)     |                      | 26 / 24 mm                                                                                                                                    |
| Other feature   |                                    |                      | Turbine on the dial side                                                                                                                      |
| Limited edition |                                    |                      | Limited to 100 pieces                                                                                                                         |



**A1083/1**

Stainless steel with black PVD coating\*  
 Black Turbine (12 blades), "Côtes de Genève  
 décor" under-dial with an engraved worldmap.  
 Black and white dial ring. Luminous Arabic  
 numerals, hour-markers and hands  
 Black bi-material (alligator/PU) strap  
 Stainless steel buckle with black PVD coating\*





# TURBINE SPECIAL & LIMITED EDITIONS



P-331 / In-house caliber

Renowned actor Sung Kang's genuine passion for engines and watchmaking meets Perrelet's boundless desire to surprise and innovate, giving rise to the "Turbine Sung Kang", the perfect model for automobile drivers, in a limited edition of 350 pieces. The Turbine Sung Kang, with its original 44 mm diameter case made from black PVD-coated stainless steel, indicates the hours and minutes with hands coated in Super-LumiNova, and the seconds via a yellow seconds hand. For greater visibility at the wheel, the 12 o'clock hour-marker has been moved to 2 o'clock, as is typical for offset watches. The iconic Turbine captivates the beholder with its blades that rotate at the slightest movement of the wrist, creating a unique optical effect.

## Collection specifications

|                 |                                    |                                                                                                                 |
|-----------------|------------------------------------|-----------------------------------------------------------------------------------------------------------------|
| Movement        | Mechanical automatic               | P-331 / In-house caliber                                                                                        |
|                 | Function                           | Central hands indicating hours, minutes and seconds. 12 hours at 2 o'clock for better readability while driving |
|                 | Special feature                    | Turbine technology                                                                                              |
|                 | Vibrations per hour                | 28'800 (4 Hz)                                                                                                   |
|                 | Autonomy in hours (fully wound up) | 42 hours                                                                                                        |
|                 | Number of rubies                   | 25 jewels                                                                                                       |
| Case            | Case                               | Ø 44 mm                                                                                                         |
|                 | Case thickness                     | 13.30 mm                                                                                                        |
|                 | Crystal                            | Glareproofed sapphire crystal on both sides                                                                     |
|                 | Caseback                           | See-through caseback                                                                                            |
|                 | Water-resistance                   | 5 ATM                                                                                                           |
| Bracelet        | Buckle                             | Pin buckle                                                                                                      |
|                 | Width of strap (lugs / buckle)     | 26 / 24 mm                                                                                                      |
| Other feature   |                                    | Turbine on the dial side                                                                                        |
| Limited edition |                                    | Limited to 350 pieces                                                                                           |





**A1098/2**

Stainless steel with black PVD coating\*

Black Turbine (10 blades) with "SK" engraved at 6 o'clock, black under-dial with circular-grained finishing in the center, silver circular brushed ring.

Luminous Arabic numerals, hour-markers and hands

Black rubber strap

Stainless steel buckle with black PVD coating\*



## TURBINE PARANOIA



P-331 / In-house caliber

A Special Edition liable to trigger hallucinations! As soon as the Turbine starts to rotate, a spiral ribbon motif on the dial appears to spring to life, creating the impression of perpetually coiling and uncoiling in a show that is all the more fascinating because it is coated with a luminescent substance. When night falls, a blazing streamer whirls and twirls before our mesmerized gaze. The Turbine Paranoia is issued in a 48 mm-diameter XL version, and its PVD-coated steel case and rubber strap form a total-black background lit up by dazzling sparks of light.

### Collection specifications

|               |                                    |                                                     |
|---------------|------------------------------------|-----------------------------------------------------|
| Movement      | Mechanical automatic               | P-331 / In-house caliber                            |
|               | Function                           | Central hands indicating hours, minutes and seconds |
|               | Vibrations per hour                | 28,800 (4 Hz)                                       |
|               | Autonomy in hours (fully wound up) | 42 hours                                            |
|               | Number of rubies                   | 25 jewels                                           |
| Case          | Case                               | Ø 48 mm                                             |
|               | Case thickness                     | 14.30 mm                                            |
|               | Crystal                            | Glareproofed sapphire crystal on both sides         |
|               | Caseback                           | See-through caseback                                |
|               | Water-resistance                   | 5 ATM                                               |
| Bracelet      | Buckle                             | Pin buckle                                          |
|               | Width of strap (lugs / buckle)     | 28 / 24 mm                                          |
| Other feature | Turbine on the dial side           |                                                     |

\* PVD (Physical Vapor Deposition) coating

The PVD coating used by Perrelet is a high technology coating made by ion bombardment in vacuum. It is a 2-micron thick layer of carbon that has a very high wear resistance and antifriction coefficient. Its hardness offers at the same time a silky aspect particularly adapted to the Perrelet product line.



**A4024/1**

Stainless steel with black PVD coating\*

Psychedelic luminous spiral on the black Turbine (12 blades), black under-dial. Luminous Arabic numerals, hour-markers and hands

Black rubber strap

Stainless steel buckle with black PVD coating\*



## TURBINE TOXIC



P-331 / In-house caliber

Perrelet's Turbine Toxic Special Editions adopt a deliberately provocative attitude by featuring a skull motif, the latest icon of cool, appearing at the center of the under-dial in a precious interpretation. The two diamond-paved versions sparkle with dazzling radiance when the 12-blade Turbines start to turn, and the effect is all the more striking on these models with their all-black dial, case and strap. The men's model is an XL 48 mm-diameter version with a PVD-coated case teamed with a rubber strap, while the XS ladies' model measures 41 mm in diameter.

### Collection specifications

|               |                                    |                                                     |
|---------------|------------------------------------|-----------------------------------------------------|
| Movement      | Mechanical automatic               | P-331 / In-house caliber                            |
|               | Function                           | Central hands indicating hours, minutes and seconds |
|               | Special feature                    | Turbine Technology                                  |
|               | Vibrations per hour                | 28,800 (4 Hz)                                       |
|               | Autonomy in hours (fully wound up) | 42 hours                                            |
|               | Number of rubies                   | 25 jewels                                           |
| Case          | Case                               | Ø 41 mm / Ø 48 mm                                   |
|               | Case thickness                     | 12.85 mm / 14.30 mm                                 |
|               | Crystal                            | Glareproofed sapphire crystal on both sides         |
|               | Caseback                           | See-through caseback                                |
|               | Water-resistance                   | 5 ATM                                               |
| Bracelet      | Buckle                             | Folding clasp buckle / Pin buckle                   |
|               | Width of strap (lugs / buckle)     | 24/18 mm / 28/24 mm                                 |
| Other feature |                                    | Turbine on the dial side                            |

\* PVD (Physical Vapor Deposition) coating

The PVD coating used by Perrelet is a high technology coating made by ion bombardment in vacuum. It is a 2-micron thick layer of carbon that has a very high wear resistance and antifriction coefficient. Its hardness offers at the same time a silky aspect particularly adapted to the Perrelet product line.





**A4022/A**

Stainless steel with black PVD coating\*  
 Black Turbine (12 blades), skull design set with diamonds on the under-dial. Luminous Arabic numerals, hour-markers and hands  
 Black rubber strap  
 Stainless steel buckle with black PVD coating\*  
 155 diamonds (0.59 ct), Top Wesselton, VS1



**A4023/1**

Stainless steel with black PVD coating\*  
 Black Turbine (12 blades), skull design set with diamonds on the under-dial. Luminous Arabic numerals, hour-markers and hands  
 Black rubber strap  
 Stainless steel buckle with black PVD coating\*  
 210 diamonds (0.82 ct), Top Wesselton, VS1



Under-dial



Under-dial



## TURBINE POKER



P-331 / In-house caliber

Perrelet uses cards to invite us to play poker according to its own rules – riddle style. The cards spread around the dial play hide and seek beneath the characteristic 12-blade wheel. As it rotates constantly due to the wrist movement, it is hard to view the deal. This model thus offers a chance to reinvent poker by getting friends and family to guess, or bet, and keeping them in suspense until it stops completely.

### Collection specifications

|               |                                    |                                                     |
|---------------|------------------------------------|-----------------------------------------------------|
| Movement      | Mechanical automatic               | P-331 / In-house caliber                            |
|               | Function                           | Central hands indicating hours, minutes and seconds |
|               | Vibrations per hour                | 28,800 (4 Hz)                                       |
|               | Autonomy in hours (fully wound up) | 42 hours                                            |
|               | Number of rubies                   | 25 jewels                                           |
| Case          | Case                               | Ø 44 mm                                             |
|               | Case thickness                     | 13 mm                                               |
|               | Crystal                            | Glareproofed sapphire crystal on both sides         |
|               | Caseback                           | See-through caseback                                |
|               | Water-resistance                   | 5 ATM                                               |
| Bracelet      | Buckle                             | Folding clasp buckle                                |
|               | Width of strap (lugs / buckle)     | 25 / 20 mm                                          |
| Other feature |                                    | Turbine on the dial side                            |

\* PVD (Physical Vapor Deposition) coating

The PVD coating used by Perrelet is a high technology coating made by ion bombardment in vacuum. It is a 2-micron thick layer of carbon that has a very high wear resistance and antifriction coefficient. Its hardness offers at the same time a silky aspect particularly adapted to the Perrelet product line.



**A4018/1**

Stainless steel with black PVD coating\*  
Black Turbine (12 blades), one pair of sevens.  
Luminous Arabic numerals, hour-markers and hands.  
Black rubber strap  
Stainless steel buckle with black PVD coating\*



**A4018/2**

Stainless steel with black PVD coating\*  
Black Turbine (12 blades), one pair of sevens and two royal flushes, one with spades and one with hearts. Luminous Arabic numerals, hour-markers and hands.  
Black rubber strap  
Stainless steel buckle with black PVD coating\*



**A4018/3**

Stainless steel with black PVD coating\*  
Black Turbine (12 blades), Two full suits, three of a kind and a pair of sevens as well as a trip kings and pair of sevens. Luminous Arabic numerals, hour-markers and hands.  
Black rubber strap  
Stainless steel buckle with black PVD coating\*



Under-dial



Under-dial



Under-dial



## TURBINE MACAU



P-331 / In-house caliber

Perrelet's iconic Turbine collection welcomes the new Turbine Macau. Released in a limited edition of 100 pieces, this model transports the owner to the world of card games. The beauty of the dial lies in the rotating 12 blades of the black turbine. When the wrist is turned, the black turbine reveals a black subdial screen-printed in the four suits of a deck of cards which appear as greyed-out wallpaper. Each suit is then highlighted in black or red, alternating with the luminous Arabic numerals which indicate the time. For casino fans or simply enthusiasts of refined, original and innovative watchmaking, Turbine Macau is the perfect answer!

|                 |                                    |                                                                                                                                                                                                                                                                                                                                                           |                                                     |
|-----------------|------------------------------------|-----------------------------------------------------------------------------------------------------------------------------------------------------------------------------------------------------------------------------------------------------------------------------------------------------------------------------------------------------------|-----------------------------------------------------|
| Movement        | Movement                           | Mechanical automatic                                                                                                                                                                                                                                                                                                                                      | P-331 / In-house caliber                            |
|                 | Function                           |                                                                                                                                                                                                                                                                                                                                                           | Central hands indicating hours, minutes and seconds |
|                 | Special feature                    |                                                                                                                                                                                                                                                                                                                                                           | Turbine technology                                  |
|                 | Vibrations per hour                |                                                                                                                                                                                                                                                                                                                                                           | 28'800 (4 Hz)                                       |
|                 | Autonomy in hours (fully wound up) |                                                                                                                                                                                                                                                                                                                                                           | 42 hours                                            |
|                 | Number of rubies                   |                                                                                                                                                                                                                                                                                                                                                           | 25 jewels                                           |
| Case            | Case                               |                                                                                                                                                                                                                                                                                                                                                           | Ø 44 mm                                             |
|                 | Case thickness                     |                                                                                                                                                                                                                                                                                                                                                           | 13.30 mm                                            |
|                 | Crystal                            |                                                                                                                                                                                                                                                                                                                                                           | Glareproofed sapphire crystal on both sides         |
|                 | Caseback                           |                                                                                                                                                                                                                                                                                                                                                           | See-through caseback                                |
|                 | Water-resistance                   |                                                                                                                                                                                                                                                                                                                                                           | 5 ATM                                               |
| Bracelet        | Buckle                             |                                                                                                                                                                                                                                                                                                                                                           | Folding buckle                                      |
|                 | Width of strap (lugs / buckle)     |                                                                                                                                                                                                                                                                                                                                                           | 25 / 20 mm                                          |
| Other features  |                                    | Turbine on the dial side                                                                                                                                                                                                                                                                                                                                  |                                                     |
| in              |                                    | Black subdial with, underneath, a grayed-out wallpaper screen-print of the suits of a deck of cards, and for the hour markers, white luminescent numerals at 3,6,9 and 12, interspersed with the suits of the cards (hearts, clubs, diamonds and spades). White luminescent second markers on small red rectangles, except at 60 where they appear green. |                                                     |
| Limited edition |                                    | Limited to 100 pieces                                                                                                                                                                                                                                                                                                                                     |                                                     |



**A1047/A**

Stainless steel with black PVD coating\*

Black Turbine (12 blades) with black subdial screen-printed in the four suits of a deck of cards which appear as greyed-out wallpaper. Luminous Arabic numerals, hour-markers and hands

Black rubber strap

Stainless steel buckle with black PVD coating\*



Under-dial





P-331 / In-house caliber

Perrelet is upping the stakes and throwing the dice again with the Turbine XL Casino collection, a winning three of a kind with three new models. The decor of all of these special editions in limited series was inspired by the elegant universe of the casino and world capital of entertainment. Tuxedos, card games, roulette and green mats. Perrelet is betting on the fun side and playing on its own skill to bring three new Turbine timepieces to life in XL 48 mm-diameter versions.

### Collection specifications

|                 |                                                          |                                                     |
|-----------------|----------------------------------------------------------|-----------------------------------------------------|
| Movement        | Mechanical automatic                                     | P-331 / In-house caliber                            |
|                 | Function                                                 | Central hands indicating hours, minutes and seconds |
|                 | Special feature                                          | Turbine Technology                                  |
|                 | Vibrations per hour                                      | 28,800 (4 Hz)                                       |
|                 | Autonomy in hours (fully wound up)                       | 42 hours                                            |
|                 | Number of rubies                                         | 25 jewels                                           |
| Case            | Case                                                     | Ø 48 mm                                             |
|                 | Case thickness                                           | 14.30 mm                                            |
|                 | Crystal                                                  | Glareproofed sapphire crystal on both sides         |
|                 | Caseback                                                 | See-through caseback                                |
|                 | Water-resistance                                         | 5 ATM                                               |
| Bracelet        | Buckle                                                   | Pin buckle                                          |
|                 | Width of strap (lugs / buckle)                           | 28 / 24 mm                                          |
| Other feature   | Turbine on the dial side                                 |                                                     |
| Limited edition | Limited edition to 100 or 250 pieces depending the model |                                                     |

\* PVD (Physical Vapor Deposition) coating

The PVD coating used by Perrelet is a high technology coating made by ion bombardment in vacuum. It is a 2-micron thick layer of carbon that has a very high wear resistance and antifriction coefficient. Its hardness offers at the same time a silky aspect particularly adapted to the Perrelet product line.



**A1051/A**

Turbine Monte-Carlo  
Stainless steel with black PVD coating\*  
Black Turbine (12 blades), . Arabic numerals, hour-markers and hands  
Black rubber strap  
Stainless steel buckle with black PVD coating\*  
**Limited Edition (100 pieces)**



Under-dial



**A4052/1**

Stainless steel with black PVD coating\*  
Black Turbine (12 blades), one pair of sevens and two royal flushes on the under-dial. Luminous Arabic numerals, hour-markers and hands  
Black rubber strap  
Stainless steel buckle with black PVD coating\*  
**Limited Edition (250 pieces)**



Under-dial



**A4053/1**

Stainless steel with black PVD coating\*  
Black Turbine (12 blades), golden under-dial. Rose gold (18 cts, 4N) top rotor ring. Golden Arabic numerals, hour-markers and hands  
Black rubber strap  
Stainless steel buckle with black PVD coating\*  
**Limited Edition (250 pieces)**



Under-dial



**A4054/1**

Stainless steel with black PVD coating\*  
Black Turbine (12 blades), American roulette on the under-dial. Luminous Arabic numerals, hour-markers and hands  
Black rubber strap  
Stainless steel buckle with black PVD coating\*  
**Limited Edition (250 pieces)**



Under-dial



P-371 / In-house caliber

Turbillon for a Tur(bine) with a (tour)billon : a sensational and aristocratic world première. A crystal veil offers the admiring gaze a chance to plunge into the innovative heart of a prestigious movement. The Turbillon debuts a refined turbine carved out of noble sapphire. The transparent blades discreetly enliven the dial and unexpected reveal the brand-new tourbillon from Perrelet. The prestigious mechanism incorporates an innovative escapement with an oxidized silicon wheel and lever, at the heart of an exclusive self-winding movement developed by the sister company in the Vallée de Joux. The design of the Turbillon embodies a blend of power and elegance expressed in a resolutely contemporary spirit. This exclusive collection is issued in a 60-piece limited edition comprising 20 of each version.

## Collection specifications

|                 |                                    |                                                                                                 |
|-----------------|------------------------------------|-------------------------------------------------------------------------------------------------|
| Movement        | Mechanical automatic               | P-371 / In-house caliber                                                                        |
|                 | Function                           | Central hands indicating hours and minutes.<br>Seconds on the tourbillon carriage at 12 o'clock |
|                 | Special feature                    | Turbine Technology, Tourbillon                                                                  |
|                 | Vibrations per hour                | 28,800 (4 Hz)                                                                                   |
|                 | Autonomy in hours (fully wound up) | 65 hours                                                                                        |
|                 | Number of rubies                   | 27 jewels                                                                                       |
| Case            | Case                               | Ø 46 mm                                                                                         |
|                 | Case thickness                     | 13.40 mm                                                                                        |
|                 | Crystal                            | Glareproofed sapphire crystal on both sides                                                     |
|                 | Caseback                           | See-through caseback                                                                            |
|                 | Water-resistance                   | 5 ATM                                                                                           |
| Bracelet        | Buckle                             | Pin buckle                                                                                      |
|                 | Width of strap (lugs / buckle)     | 28 / 24 mm                                                                                      |
| Other feature   |                                    | Sapphire Turbine on the dial side                                                               |
| Limited edition |                                    | Limited edition to 20 pieces per model                                                          |

\* PVD (Physical Vapor Deposition) coating

The PVD coating used by Perrelet is a high technology coating made by ion bombardment in vacuum. It is a 2-micron thick layer of carbon that has a very high wear resistance and antifriction coefficient. Its hardness offers at the same time a silky aspect particularly adapted to the Perrelet product line.



**A1077/1**

Stainless steel middle case, bezel and back with black PVD coating\*

Transparent sapphire Turbine (10 blades), black under-dial. Luminous Arabic numerals, hour-markers and hands

Black rubber strap

Stainless steel buckle

**Limited Edition (20 pieces)**



**A1080/1**

Stainless steel with black PVD coating\*

Transparent sapphire Turbine (10 blades), black under-dial. Luminous Arabic numerals, hour-markers and hands

Black rubber strap

Stainless steel buckle with black PVD coating\*

**Limited Edition (20 pieces)**



**A3037/1**

Stainless steel middle case with black PVD coating\*, rose gold (18 cts, 4N) bezel and back

Transparent sapphire Turbine (10 blades), black under-dial. Rose gold (18 cts, 4N) top rotor ring. Luminous Arabic numerals, hour-markers and hands

Black rubber strap

Stainless steel buckle with black PVD coating\*

**Limited Edition (20 pieces)**







# DIAMOND FLOWER





## DIAMOND FLOWER AMYTIS



P-181-H / In-house caliber

Perrelet enriches its ladies' Diamond Flower line with a new model named Diamond Flower Amytis: collection designed "by women for women" and which combines a unique technique with brilliant expertise. This name evoking ancient history is inspired by the story of the hanging gardens of Babylon. The precious timepieces are equipped with the Double Rotor P-181-H caliber, patented by Perrelet and entirely produced within its Manufacture. In this collection, the rotor on the dial side depicts flower petals swaying in step with wrist movements. Each woman becomes actively involved in the poetic dynamics of her watch through her physical gestures. The mother-of-pearl, diamond, black, white or anthracite dials offer a delightful array of colors and contrasts that will elegantly accompany every woman in her daily life. Roman numerals converging towards the center add a final touch of character and originality to this collection.

### Collection specifications

|               |                                    |                                                     |
|---------------|------------------------------------|-----------------------------------------------------|
| Movement      | Mechanical automatic               | P-181-H / In-house caliber                          |
|               | Function                           | Central hands indicating hours, minutes and seconds |
|               | Special feature                    | Double Rotor Technology                             |
|               | Vibrations per hour                | 28,800 (4 Hz)                                       |
|               | Autonomy in hours (fully wound up) | 42 hours                                            |
|               | Number of rubies                   | 26 jewels                                           |
| Case          | Case                               | Ø 36.50 mm                                          |
|               | Case thickness                     | 12.30 mm                                            |
|               | Crystal                            | Glareproofed sapphire crystal on both sides         |
|               | Caseback                           | See-through caseback                                |
|               | Water-resistance                   | 5 ATM                                               |
| Bracelet      | Buckle                             | Folding clasp buckle                                |
|               | Width of strap (lugs / buckle)     | 16/14 mm                                            |
| Other feature |                                    | Second rotor on the dial side (flower)              |



**A2065/4**

Stainless steel  
White mother-of-pearl dial, Roman numerals.  
Petal-shaped diamond-set Double Rotor  
White alligator strap  
Stainless steel buckle  
19 diamonds (0.04 ct), Top Wesselton, VS1



**A2065/8**

Stainless steel  
White mother of pearl, Roman numerals.  
Petal-shaped diamond-set Double Rotor  
Stainless steel bracelet  
Stainless steel buckle  
19 diamonds (0.04 ct), Top Wesselton, VS1



**A2065/5**

Stainless steel  
Black glossy dial, Roman numerals. Petal-shaped  
diamond-set Double Rotor  
Black alligator strap  
Stainless steel buckle  
19 diamonds (0.04 ct), Top Wesselton, VS1



**A2065/9**

Stainless steel  
Black glossy dial, Roman numerals. Petal-shaped  
diamond-set Double Rotor  
Stainless steel bracelet  
Stainless steel buckle  
19 diamonds (0.04 ct), Top Wesselton, VS1



## DIAMOND FLOWER AMYTIS



**A2065/7**

Stainless steel  
White mother of pearl, Roman numerals.  
Petal-shaped diamond-set Double Rotor  
Blue alligator strap  
Stainless steel buckle  
80 diamonds (1.02 ct), Top Wesselton, VS1



**A2065/6**

Stainless steel  
White mother of pearl, Roman numerals.  
Petal-shaped diamond-set Double Rotor  
White alligator strap  
Stainless steel buckle  
80 diamonds (1.02 ct), Top Wesselton, VS1



**A2066/4**

Stainless steel  
Anthracite and white engraved mother-of-pearl dial,  
Roman numerals. Petal-shaped Double Rotor in  
diamond-set mother-of-pearl  
Black alligator strap  
Stainless steel buckle  
80 diamonds (1.02 ct), Top Wesselton, VS1



**A2066/7**

Stainless steel  
Anthracite and white engraved mother-of-pearl dial,  
Roman numerals. Petal-shaped Double Rotor in  
diamond-set mother-of-pearl  
Stainless steel bracelet  
Stainless steel buckle  
80 diamonds (1.02 ct), Top Wesselton, VS1





**A2066/5**

Stainless steel  
Champagne dial, Roman numerals, mother-of-pearl Double Rotor  
White alligator strap  
Stainless steel buckle  
64 diamonds (0.96 ct), Top Wesselton, VS1



**A2066/8**

Stainless steel  
Champagne dial, Roman numerals, mother-of-pearl Double Rotor  
Stainless steel bracelet  
Stainless steel buckle  
64 diamonds (0.96 ct), Top Wesselton, VS1



**A2066/6**

Stainless steel  
Black dial, Roman numerals, mother-of-pearl Double Rotor  
Black alligator strap  
Stainless steel buckle  
64 diamonds (0.96 ct), Top Wesselton, VS1



**A2066/9**

Stainless steel  
Black dial, Roman numerals, mother-of-pearl Double Rotor  
Stainless steel bracelet  
Stainless steel buckle  
64 diamonds (0.96 ct), Top Wesselton, VS1



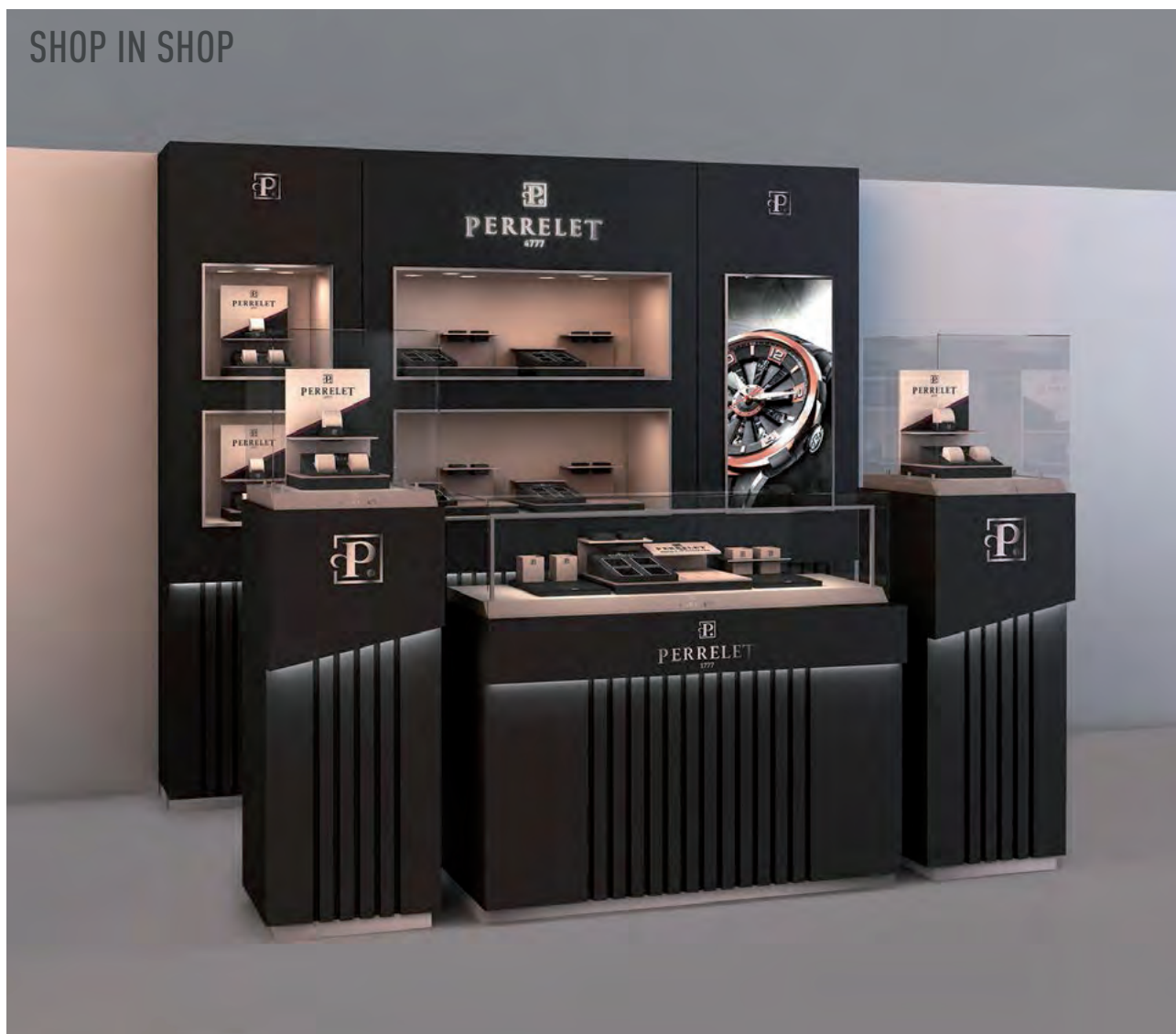


# MERCHANDISING





### SHOP IN SHOP



### SHOP IN SHOP

Price: on demand according to the project.

Perrelet or local production.

Ask the production plans to Perrelet.

Dimensions are subject to change according to the project.





### BACKWALL LIGHT BOX OR TV MODULE

Backwall Light box:  
Large: (H x W x D) 2200 x 1200 x 500 mm.  
Small: (H x W x D) 2200 x 630 x 500 mm.

Backwall TV:  
Large: (H x W x D) 2200 x 1200 x 500 mm. 42" screen.  
Small: (H x W x D) 2200 x 630 x 510 mm. 32" screen.



### BACKWALL SHOWCASE

Large: (H x W x D) 2200 x 1200 x 500 mm.  
Small: (H x W x D) 2200 x 630 x 500 mm.



### WORKING COUNTER

Dimensions: (H x W x D) 1075 x 450 x 450 mm.



### COUNTER

Dimensions: (H x W x D) 1075 x 1200 x 550 mm.



### PRESENTATION TABLE

Dimensions: (H x W x D) 750 x 1200 x 550 mm.



### TOWER SHOWCASE

Dimensions: (H x W x D) 1600 x 450 x 450 mm.



## DISPLAYS



### MEDIUM-BIG DISPLAY

Ref. ADISP-BIG

Price: CHF 430.–

Number max. of watches: 20

Width: 400 - 750 mm / Height: 400 mm / Depth: 340 mm.

Delivered with the Turbine Winder Pad.

### SMALL DISPLAY

Ref. ADISP-SMALL

Price: CHF 300.–

Number max. of watches: 5

Width: 230 - 350 mm / Height: 315 mm / Depth: 260 mm.

Delivered with the Turbine Winder Pad.







### COUNTER DISPLAY

Ref. ADISP-COUNT

Price: CHF 200.—

Number max. of watches: 19

Width: 400 - 750 mm / Height: 185 mm / Depth: 325 mm.



### SET OF 3 WATCH HOLDERS

Ref. AWSTAND4 Price: CHF 35.—



### PRESENTATION TRAY

Ref. ATRAY14

Price: CHF 25.—

Width: 300 mm / Length: 360 mm / Height: 25 mm.



## POS MATERIAL



### PRICE TAG

Ref. AETI

Price: CHF 0.50



### SELVIT

Ref. ASELV-BLACK

CHF 17.–



### SHOPPING BAG

Ref. ASBAG-L

Price: CHF 1.30

Ref. ASBAG-S

Price: CHF 1.–

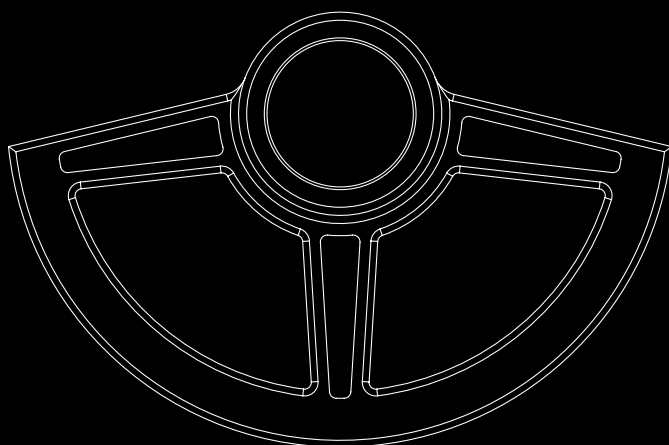


### GLOVES

Size M Ref. AGANT-M CHF 3.–

Size S Ref. AGANT-S CHF 3.–





Perrelet SA  
Rue Bubenberg 7

2502 Bienne  
Switzerland

T +41 32 346 26 26  
F +41 32 346 26 27

[perrelet@perrelet.com](mailto:perrelet@perrelet.com)  
[www.perrelet.com](http://www.perrelet.com)